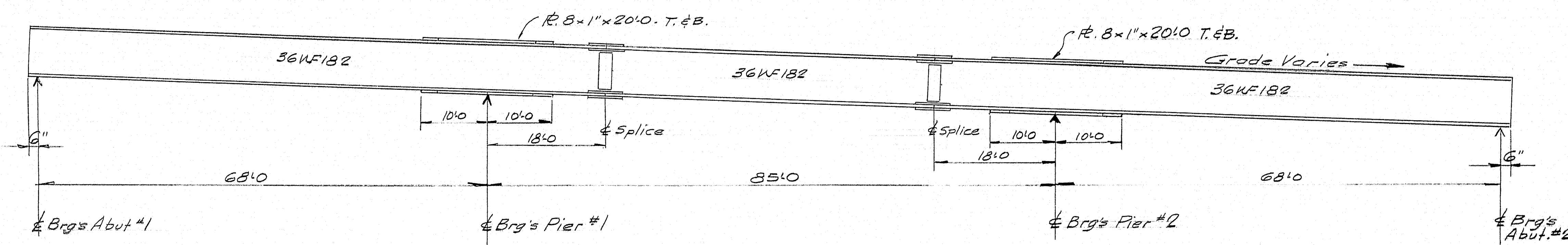
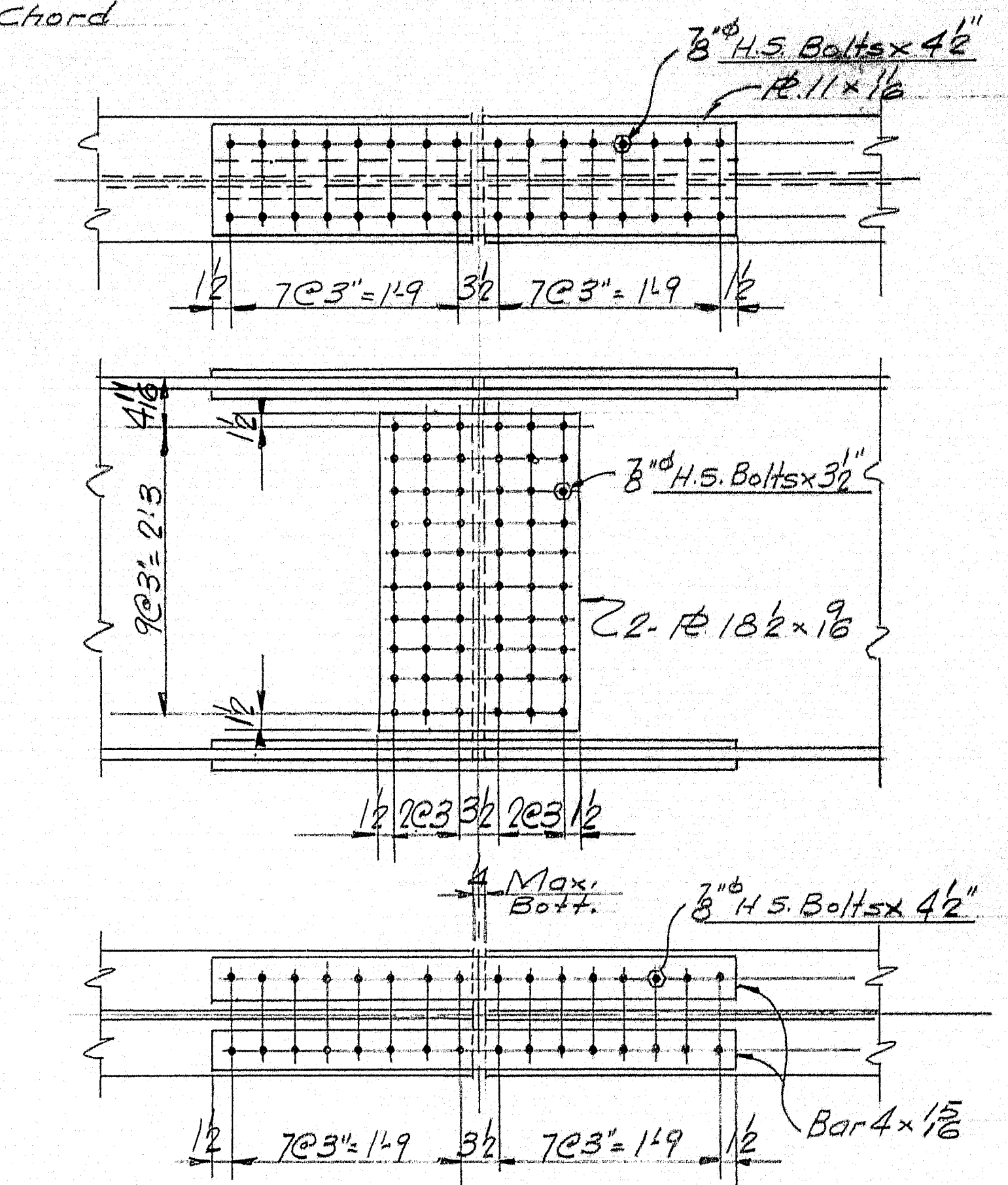


FRAMING PLAN
Dimensions Horizontal

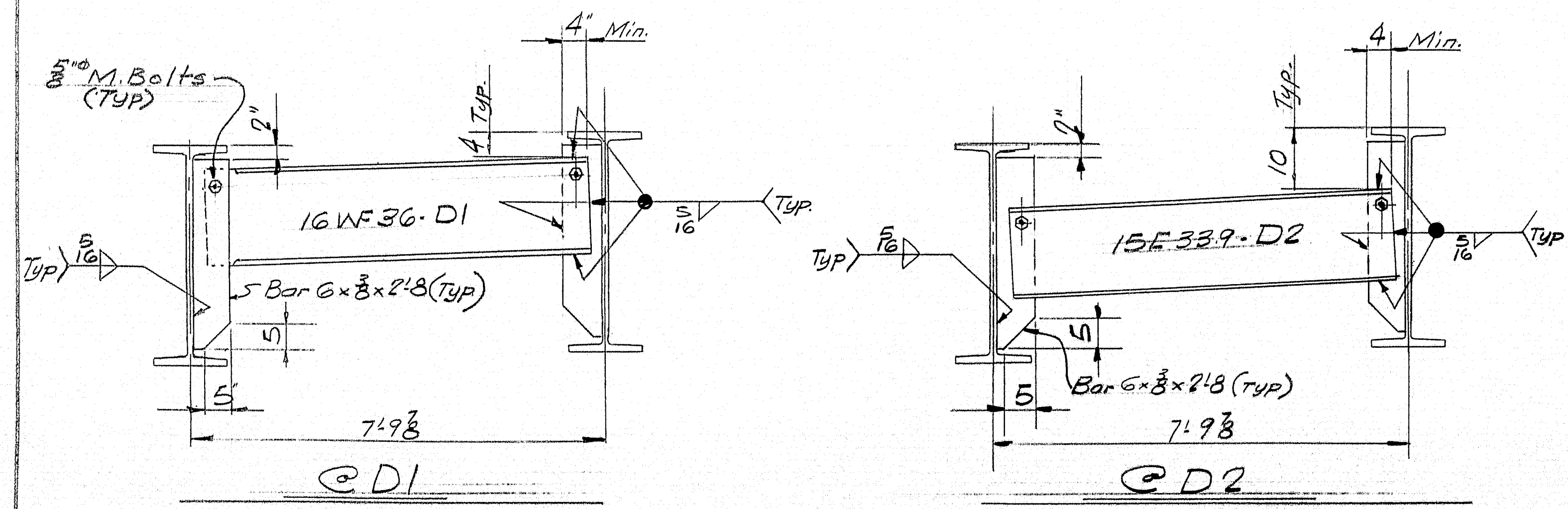
Diaphragms D1-16WF36
D2-15F33.9



ELEVATION



SPICE DETAIL



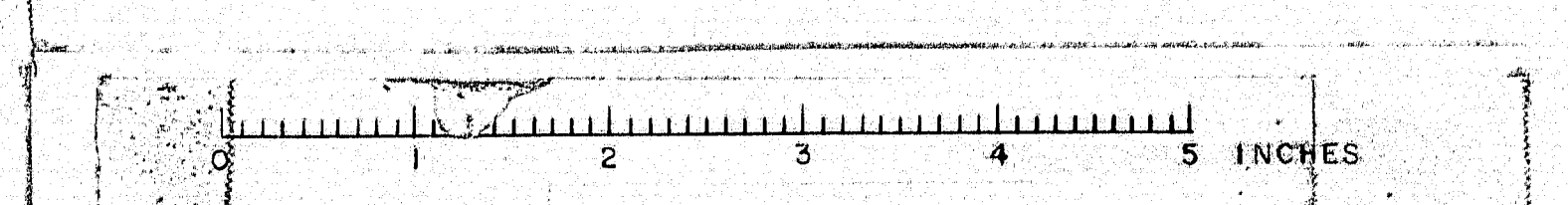
DIAPHRAGM DETAILS
Looking West

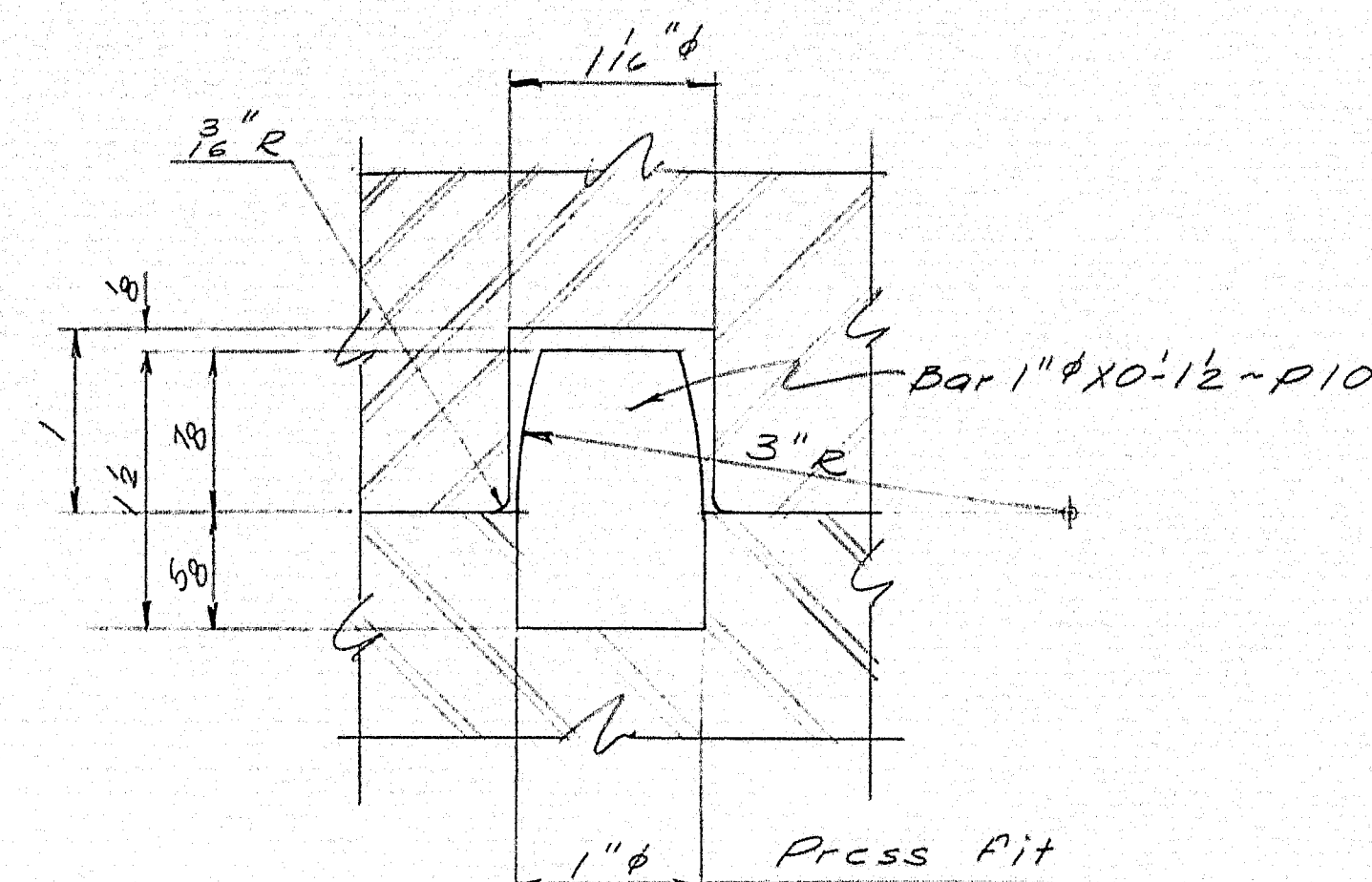
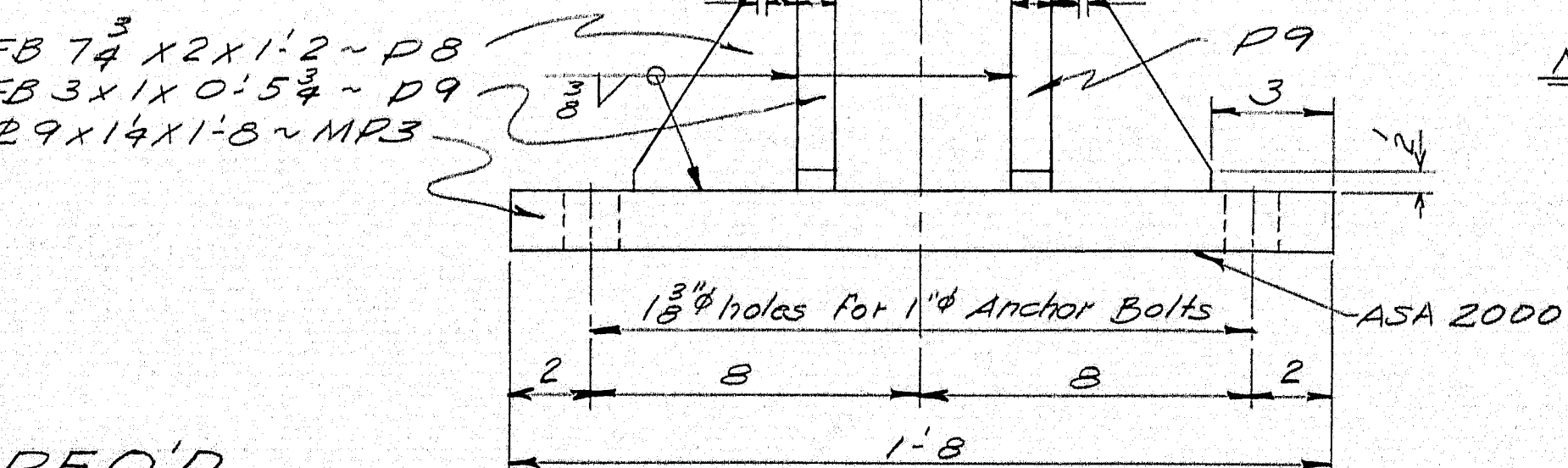
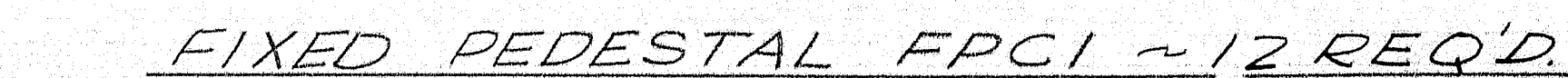
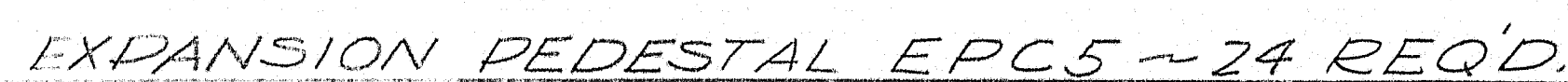
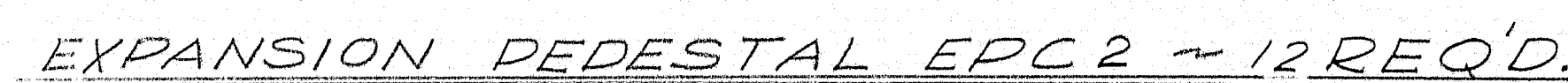
GENERAL NOTES

- 1) Material for stringers, cover plates & splices shall conform to A.S.T.M. Desig. A36. All other steel shall conform to either A.S.T.M. A36 or A7.
- 2) Holes in field splices of continuous beams are to be sub-punched (or sub-drilled) and reamed while assembled in the shop and connecting parts to be match marked and bolted for shipment.
- 3) Bearings to be field welded to stringers

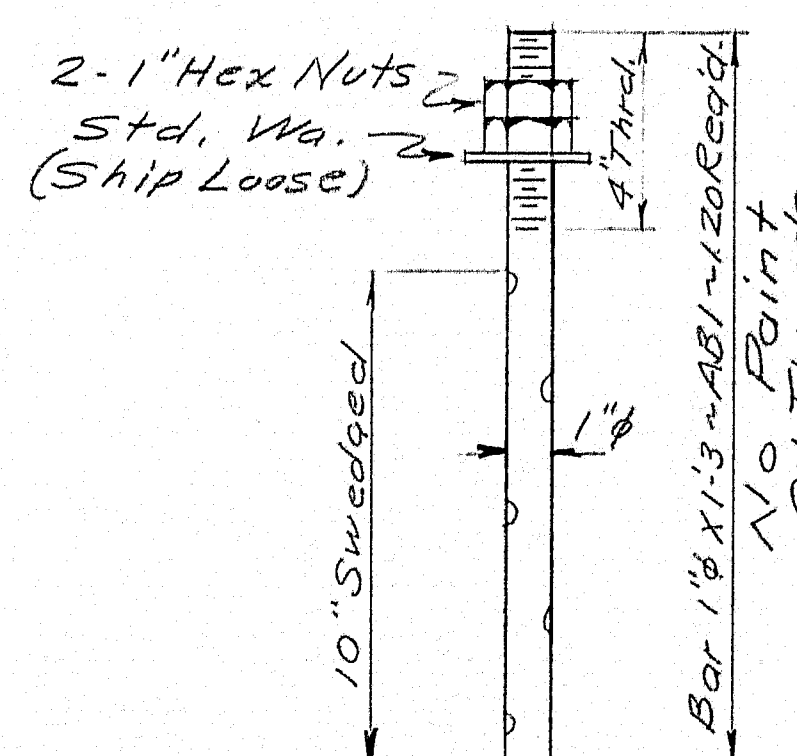
SOUTH BOUND	
FRAMING PLAN	
Bancroft & Martin Rollings Mills Company South Portland 7, Maine	
SEBASTICOOK BRIDGE PITTSFIELD, MAINE	
CUSTOMER CIANCHETTE BROS.	
DESIGNER MAINE S.H.C. BRIDGE DIV.	
ORDER NO. 1/VERBAL	DWG. NO. B63-48-E1

DRAWN	4-3-63 J.P.F.
REVISION	
REVISION	
REVISION	





DOWEL DETAIL



ANCHOR BOLT

NOTE: No Paint on Surfaces Finished ASA 125 & ASA 250. Coat With Hot Mixture of White Lead & Tallow. No Paint on Top Surface and $\frac{3}{4}$ " Down From Top Surface on SP1 & SP2. Coat With Boiled Linseed Oil.

SHOP CONNECTIONS: *WELDED*
FIELD CONNECTIONS: *WELDED*
HOLES: *AS NOTED*
PAINT: *PER ME. STATE SPECS*
RED LEAD PAINT & AS
NOTED

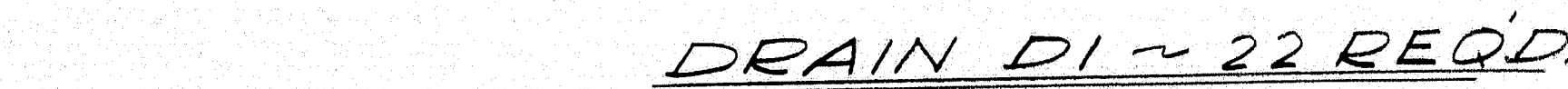
Bancroft & Martin Inc.
South Portland 7, Maine

SEBASTICOOK RIVER BRIDGE
PITTSFIELD, MAINE

CUSTOMER CIANCHETTE BROS.
DESIGNER ME. S.H.C.

ORDER NO. <u>VERBAL</u>	DWG. NO. <u>B 63-98-5</u>
-------------------------	---------------------------

89-167



SHOP CONNECTIONS: *WELDED*
FIELD CONNECTIONS: *WELDED*
HOLES: *—*
PAINT: *PER ME. STATE SPECS*
RED LEAD & OIL & AS
NOTED

Bancroft & Martin Inc.
South Portland 7, Maine

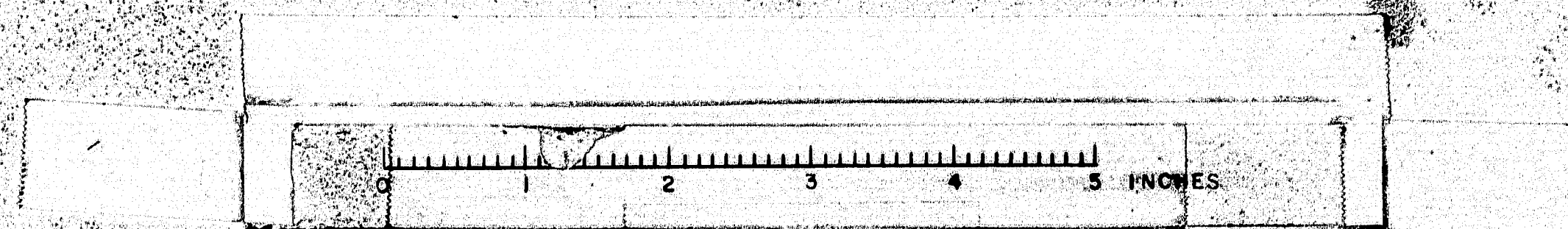
CUSTOMER CIANCHETTE BROS.
DESIGNER ME. S. H. C.

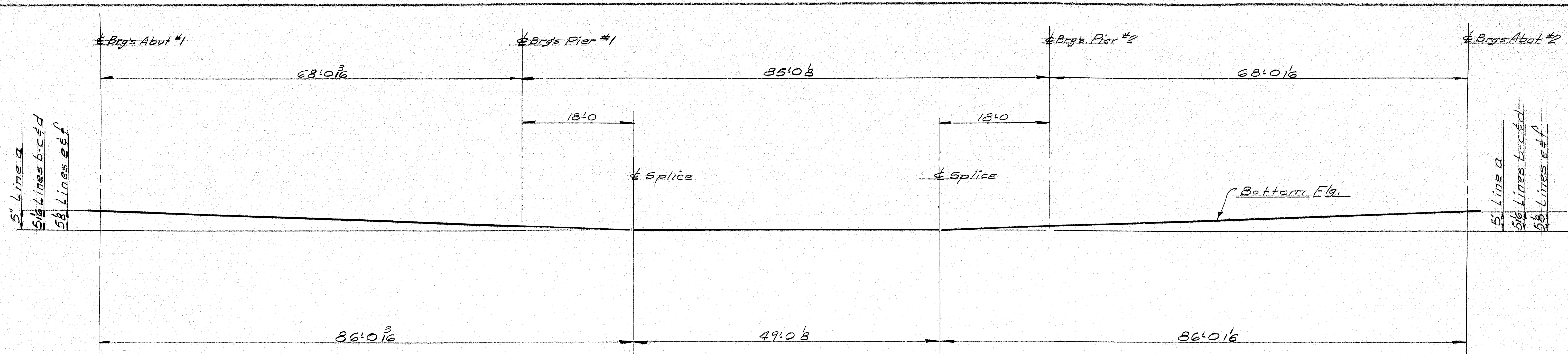
ORDER NO. _____	DWG. NO. <u>B.63-4</u>
-----------------	------------------------

DRAWN	3-19-63	TFG
REVISION		
REVISION		
REVISION		

ORDER NO. _____ DWG. NO. B63-48-52

89-168



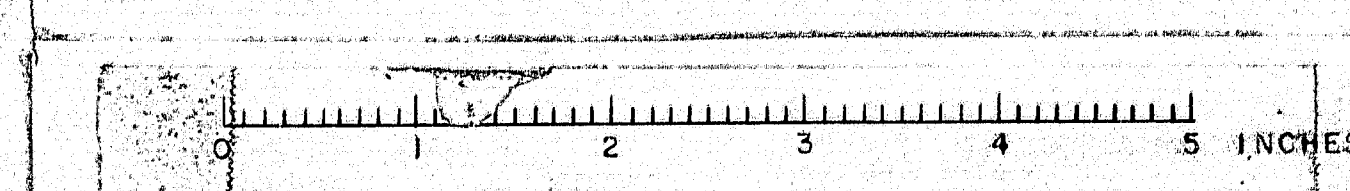


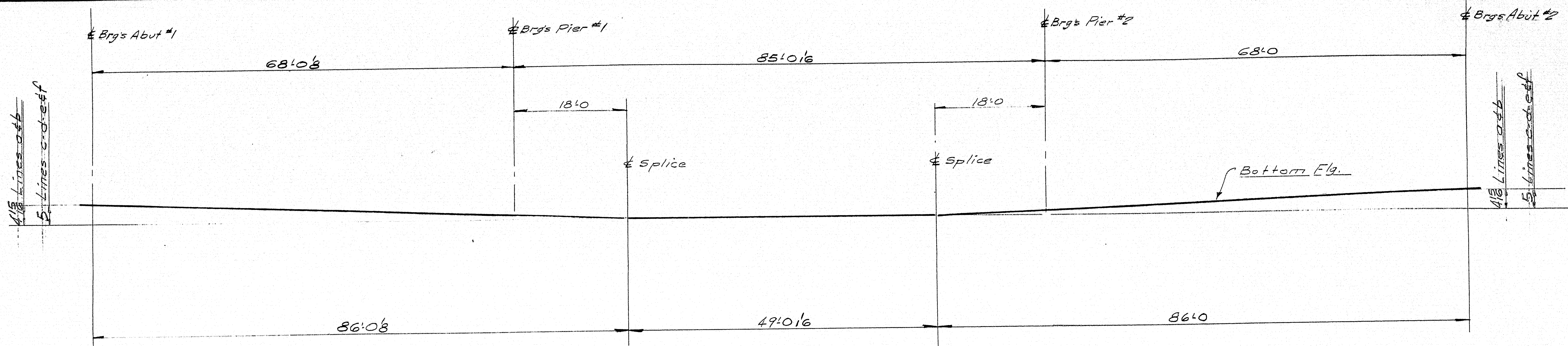
APR 4 22 63

SOUTH BOUND	
SHOP LAYOUT	
Bancroft & Martin Rolling Mills Company South Portland 1, Maine	
SEBASTICOOK BRIDGE PITTSFIELD, MAINE	
CUSTOMER	CIANCHETTE BROS.
DESIGNER	MAINE S. H. C. BRIDGE CO.
ORDER NO.	VERBAL
DWG. NO.	B63-48-S3

DRAWN	4-3-63 J.P.F.
REVISION	
REVISION	
REVISION	

MODERN BLUE PRINT CO.





SHOP LAYOUT

4" Max gap @ Bottom of splices.

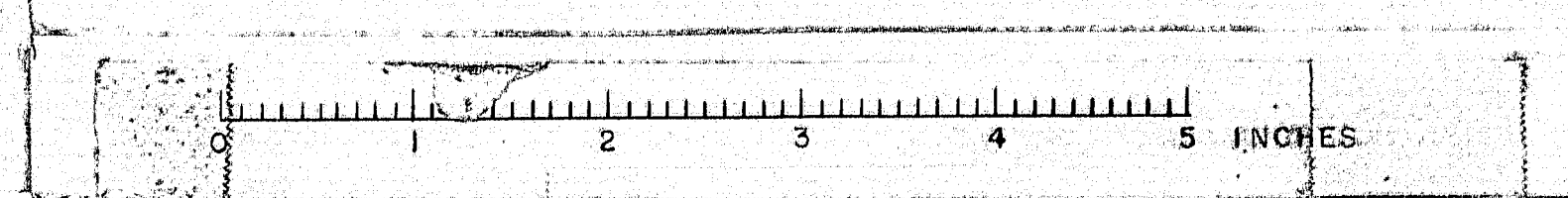
NORTHBOUND	
SHOP LAYOUT	
Bancroft & Martin Rolling Mills Company South Portland, Maine	
SEBASTICOOK BRIDGE PITTSFIELD, MAINE	
CUSTOMER CIANCHETTE BROS.	
DESIGNER MAINE S. H. C. BRIDGE DIV.	
ORDER NO. VERBAL	DWG. NO. B63-48-54

APR 4-22-63

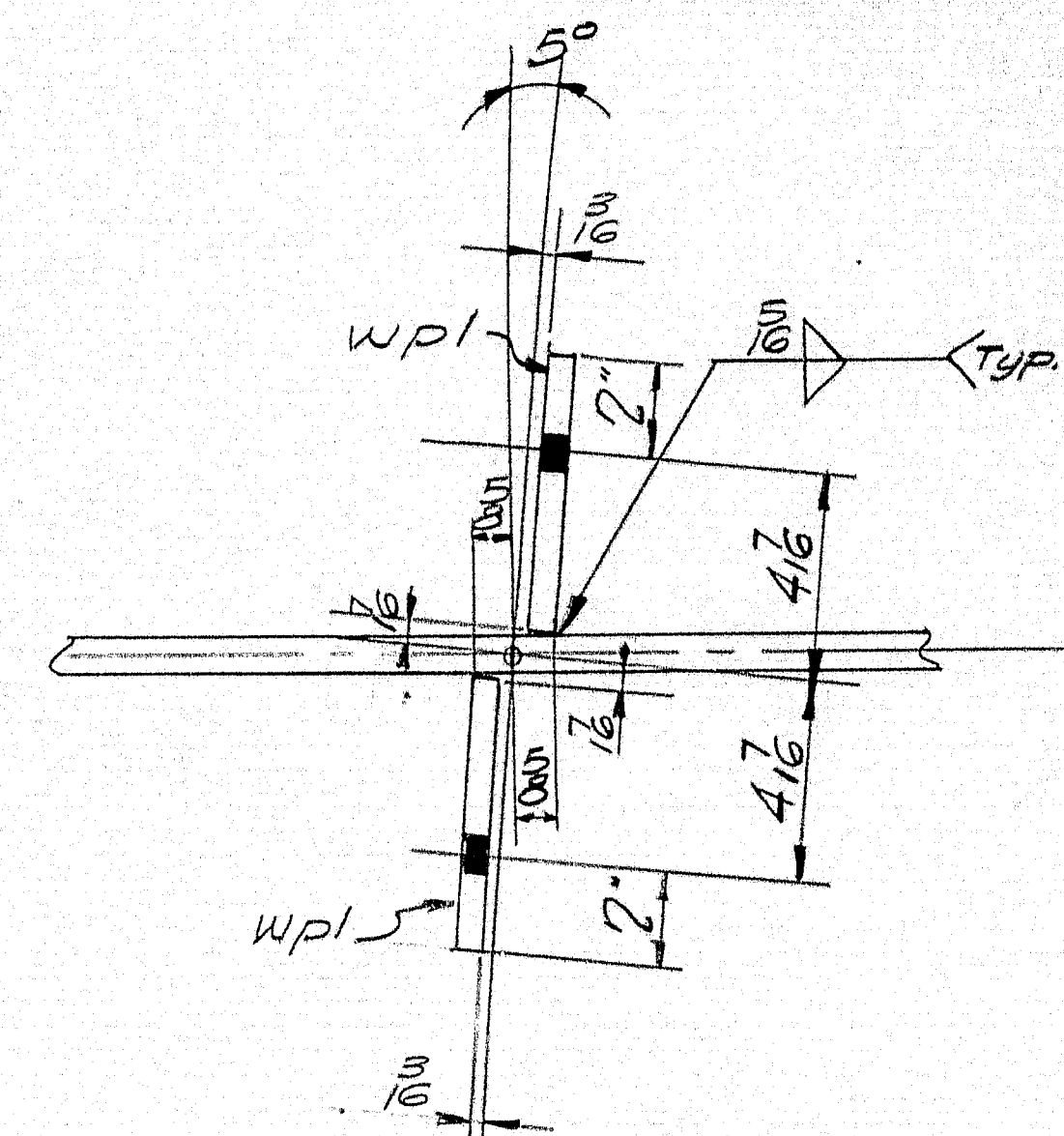
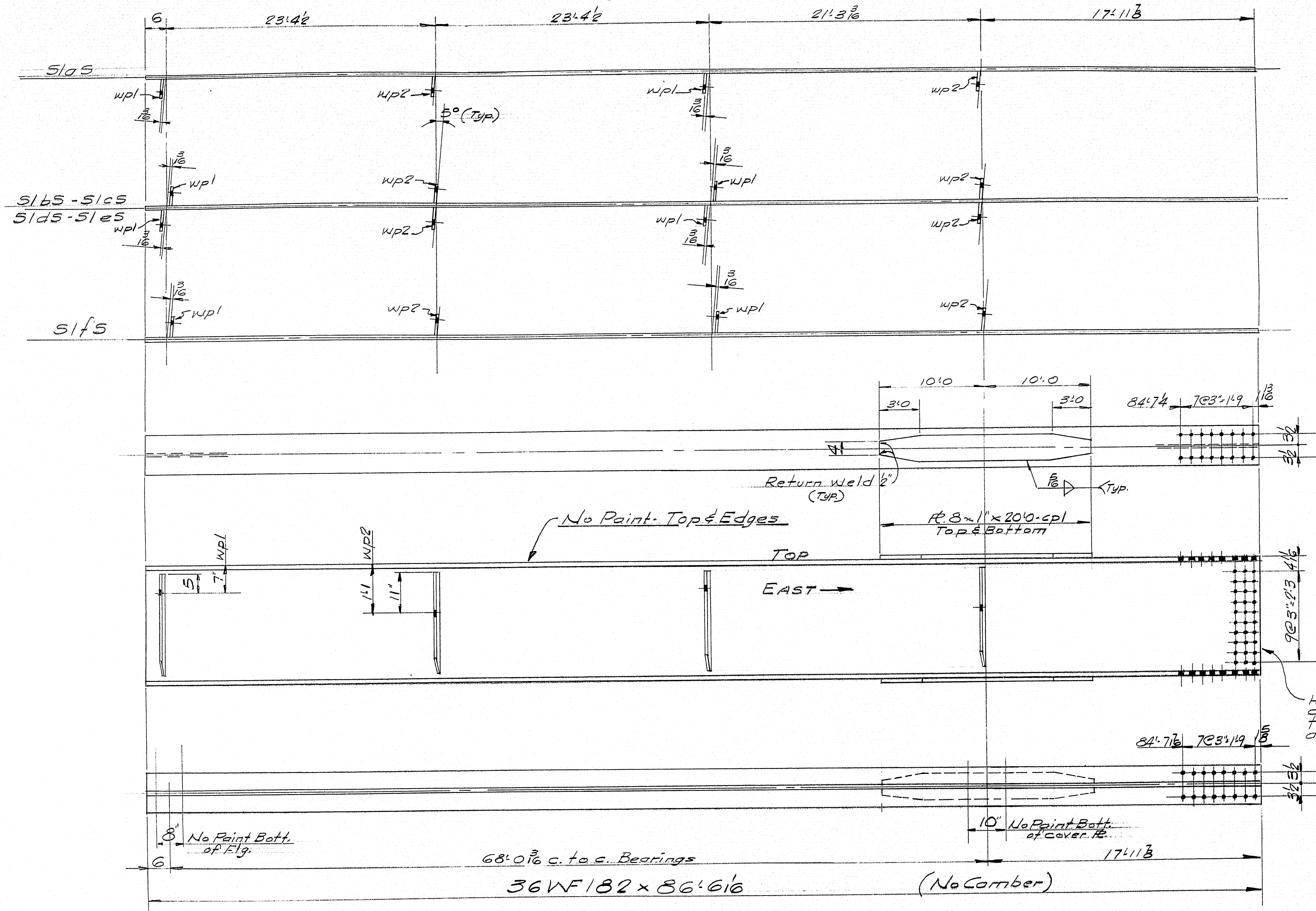
DRAWN	4-3-63	J.P.F.
REVISION		
REVISION		
REVISION		

6

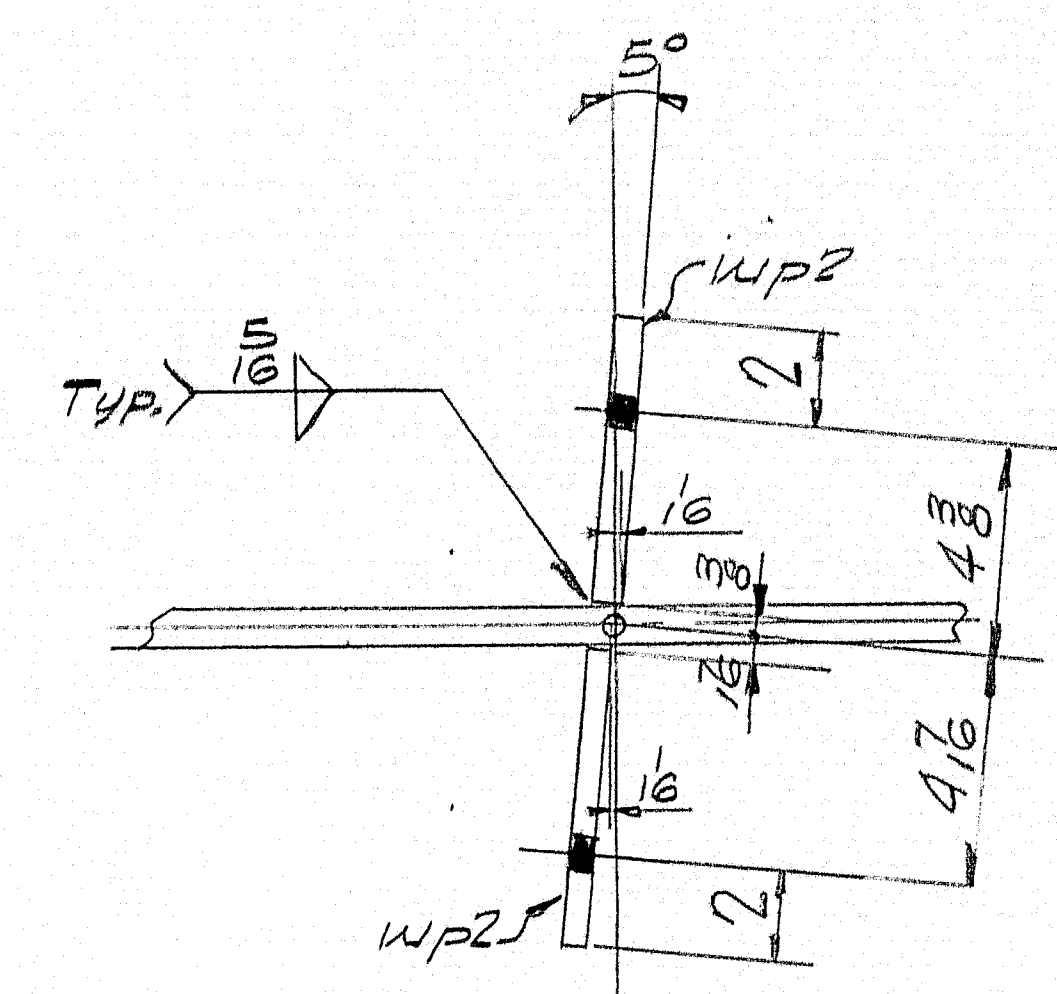
89-170



Sections taken looking down @ web



Detail @ wpl



Detail @ wp2

Holes in web are to be drilled using spl as a template while beams are shop assembled

SPRICE NOTE

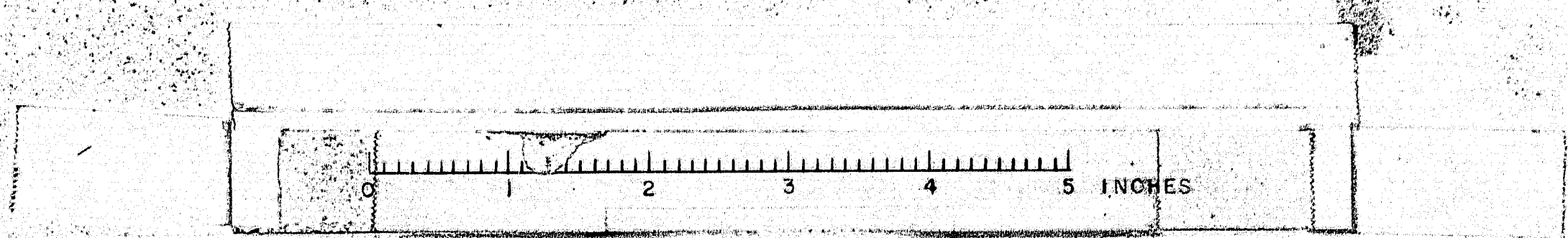
HOLES ARE FOR HIGH TENSILE BOLTS
They are to be free from burrs
and shall not be painted on any
surface within 5" of such open
holes.

For Bill of Materials
General Notes see Dwg. 55

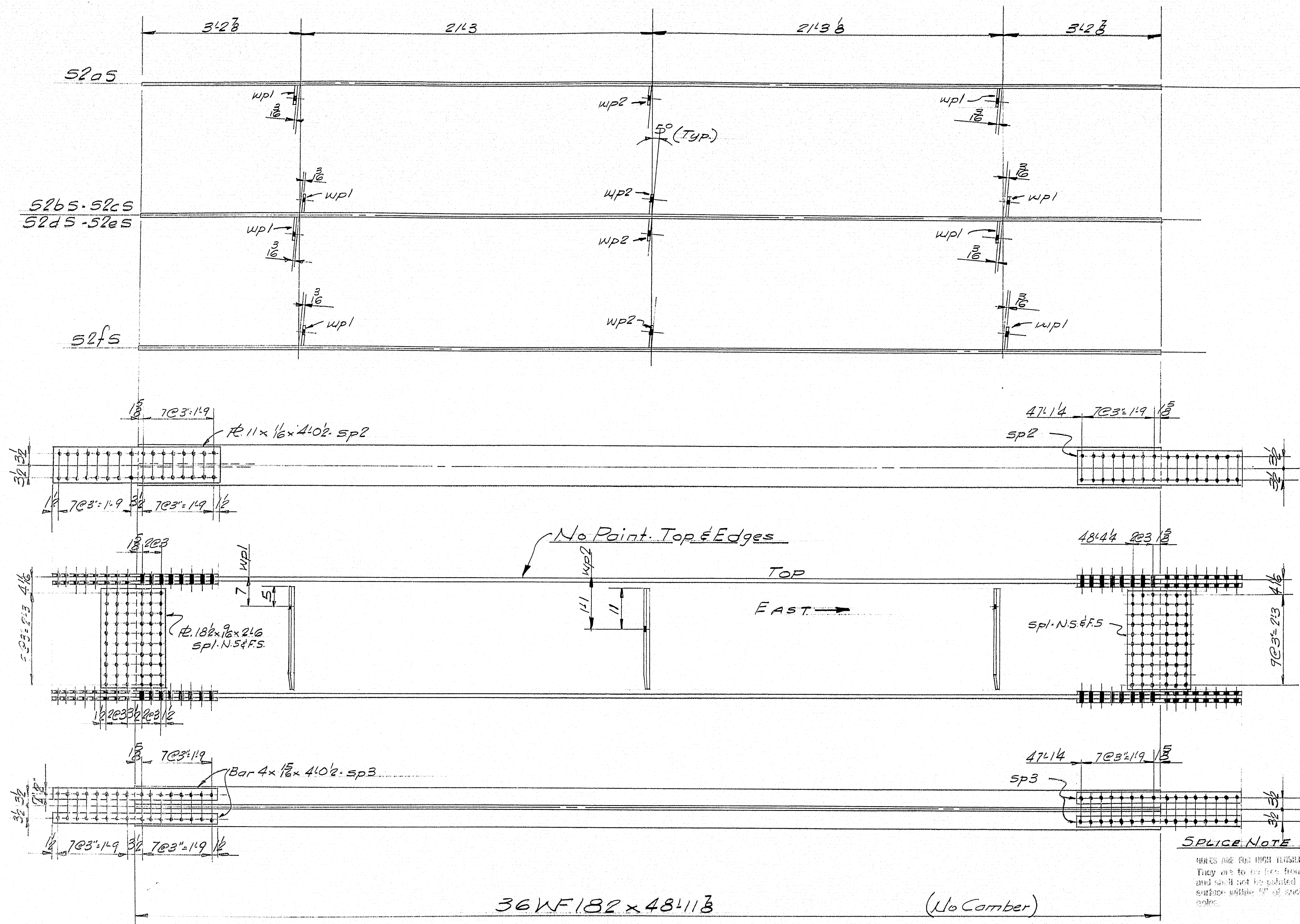
SOUTHBOUND	
STRINGER DETAILS: SPAN 1	
Ramsco & Martin Holdings, Mills Company	
South Portland, Maine	
SEBASTICOOK BRIDGE	
PITTSFIELD, MAINE	
CUSTOMER CIANCHETTE BROS.	
DESIGNER MAINE S.H.G. BRIDGE DIV.	
ORDER NO. VERBAL	
DWG. NO. 863-48-55	

DRAWN	4.5.63 JRR
REVISION	
REVISION	
REVISION	

6



Sections taken looking down @ web.



52a5 - ONE REQ'D.
52b5 - ONE REQ'D.
52c5 - ONE REQ'D.

52d5 - ONE REQ'D.
52e5 - ONE REQ'D.
52f5 - ONE REQ'D.

GENERAL NOTES

- 1) Material for stringers, cover plates & splices shall conform to A.S.T.M. A-36. All other steel shall conform to either A.S.T.M. A-36 or A-7.
- 2) Holes in field splices are to be sub-punched (or sub-drilled) and reamed while assembled in the shop & connecting parts to be match marked & bolted for shipment. For shop layout see Dwg. 53.
- 3) Holes: Splices 1/2" ϕ 16" x wp 1/2" ϕ

SPlice NOTE

HOLES ARE FOR HIGH TENSILE BOLT. They are to be free from burr and shall not be painted on any surface within 1/2" of such open hole.

SHIP		BILL OF MATERIAL				DWG. NO B63-48-SG
MARK	NO.	MARK	SHAPE	LENGTH	WT.	REMARKS
51a5	1		36WF182	86' 6 1/2"		No Camber
51b5	1			86' 6 1/2"		
51c5	1			86' 6 1/2"		
51d5	1			86' 6 1/2"		
51e5	1			86' 6 1/2"		
51f5	1			86' 6 1/2"		
52a5	1			48' 11 3/8"		
52b5	1			48' 11 3/8"		
52c5	1			48' 11 3/8"		
52d5	1			48' 11 3/8"		
52e5	1			48' 11 3/8"		
52f5	1			48' 11 3/8"		
53a5	1			86' 5 1/2"		
53b5	1			86' 5 1/2"		
53c5	1			86' 5 1/2"		
53d5	1			86' 5 1/2"		
53e5	1			86' 5 1/2"		
53f5	1			86' 5 1/2"		
			36WF182	86' 5 1/2"		No Camber
24	cpl	R. 8 x 1"		20' 0"		
24	sp1	R. 18 1/2 x 1/2"		2' 6"		
24	sp2	R. 11 x 1/2"		4' 0 1/2"		
48	sp3	Bar 4 x 1/2"		4' 0 1/2"		
60	wpl	Bar 6 x 3/8"		2' 8"		
50	wp2	Do		2' 8"		
FIELD	760	3" H.S. BOLTS		0' 32"		Web (720)
Do	800	Do		0' 42"		Flgs (768)
Do	3120	3" HARD WASHERS				
ITEM 702-103						

This Bill of Material also covers Dwg's 55 & 57

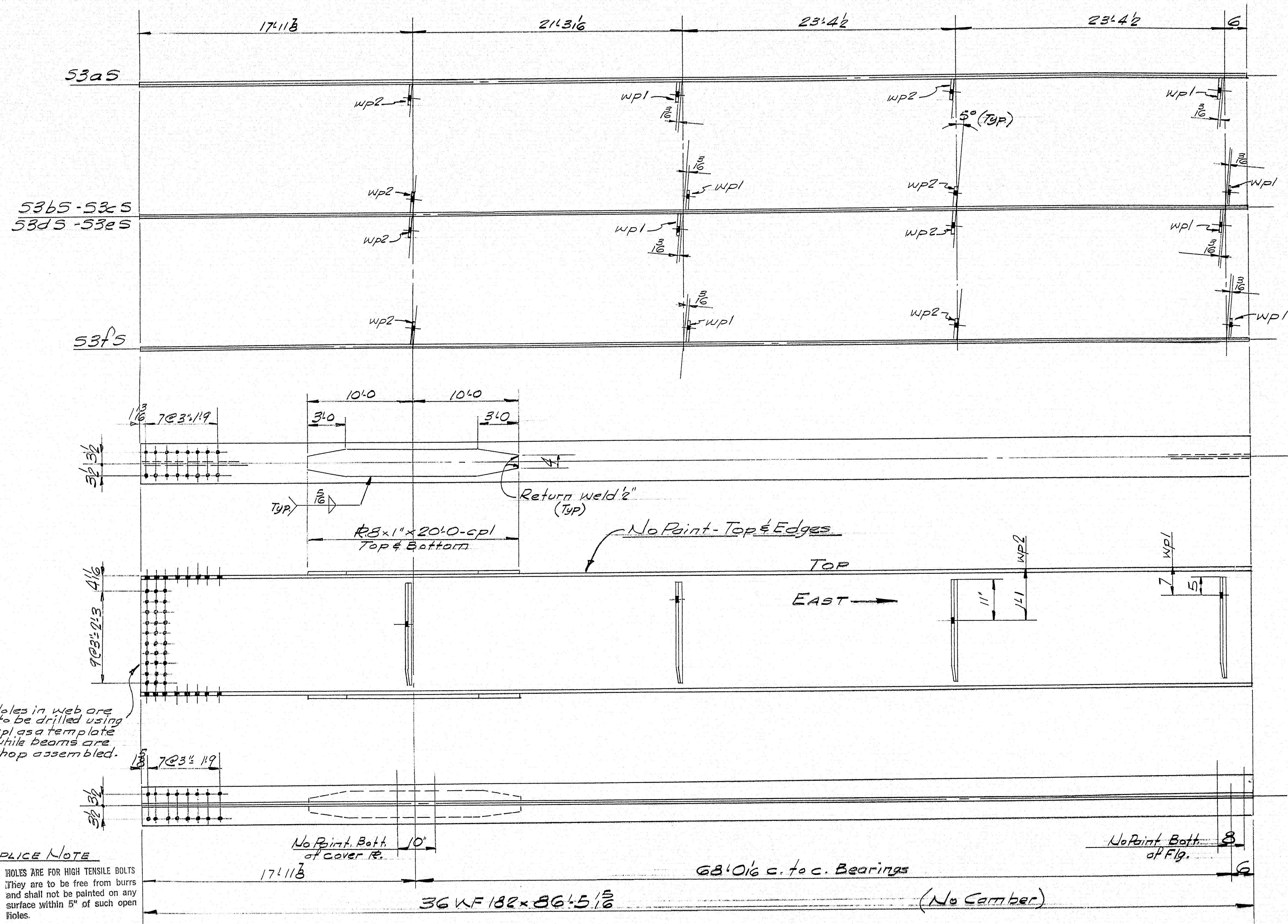
SHOP CONNECTIONS: Welded
FIELD CONNECTIONS: Bolted-Welded
HOLES: See General Notes
PAINT: Per Maine Specs. & As Noted

SOUTH BOUND	
STRINGER DETAILS: SPAN 2	
Pancroft & Martin Inc. South Portland 7, Maine	
SEBASTICOOK BRIDGE PITTSFIELD, MAINE	
CUSTOMER: CLANCHETTE BROS.	
DESIGNER: MAINE S.H.C. BRIDGES	
ORDER NO. VERBAL	DWG. NO B63-48-SG

APP 4-22-63

DRAWN	4-5-63 JRR
REVISION	
REVISION	
REVISION	

Sections taken looking down @ web



Holes in web are to be drilled using spl as a template while beams are shop assembled.

SPlice Note

HOLES ARE FOR HIGH TENSILE BOLTS
They are to be free from burrs
and shall not be painted on any
surface within 5" of such open
holes.

5395 - ONE REQ'D

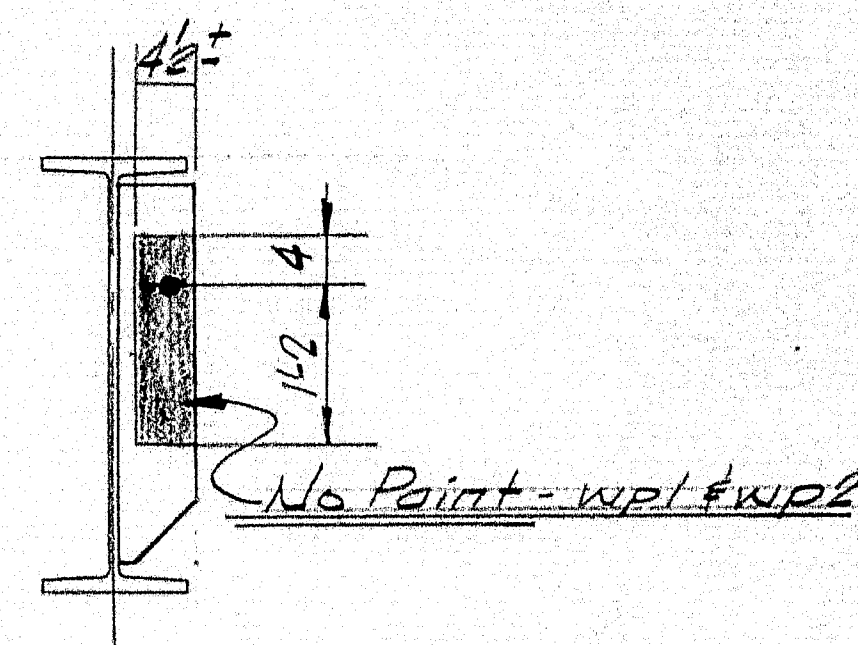
5365 - ONE REG'D.

53CS - ONE REQ'D

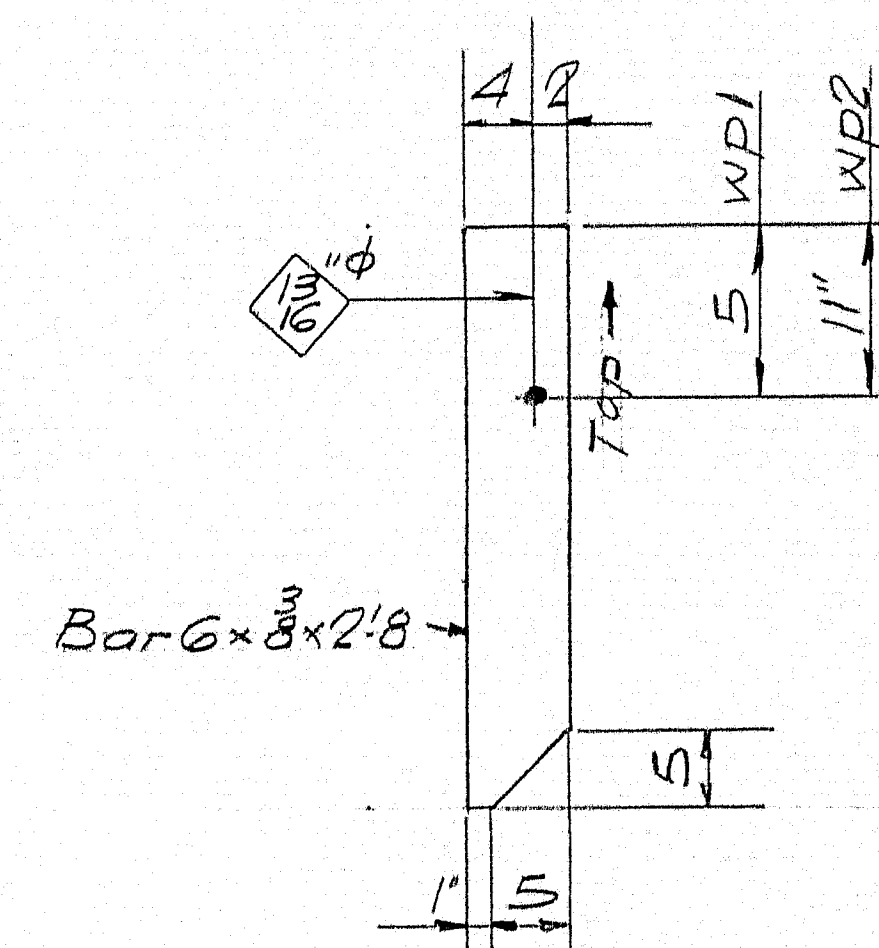
53d5 - ONE REQ'D.

53e5 - ONE REG'D

53fs - ONE REQ'D



Typ. Detail @ Web Plates



wpl - Detail (60 Reg'd)

wp2-Detail (50 Reg'd.)

For Bill of Materials & General Notes see DWG 56

SOUTH BOUND

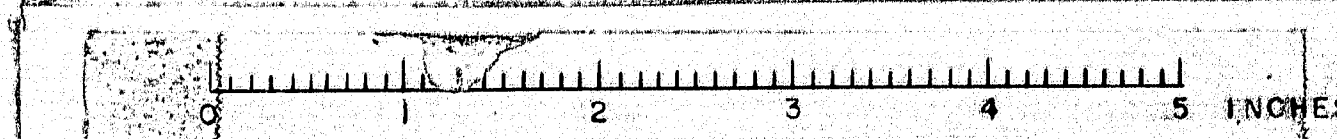
STRINGER DETAILS- SPAN 3

Bancroft & Martin Rolling Mills Company
South Portland 7, Maine

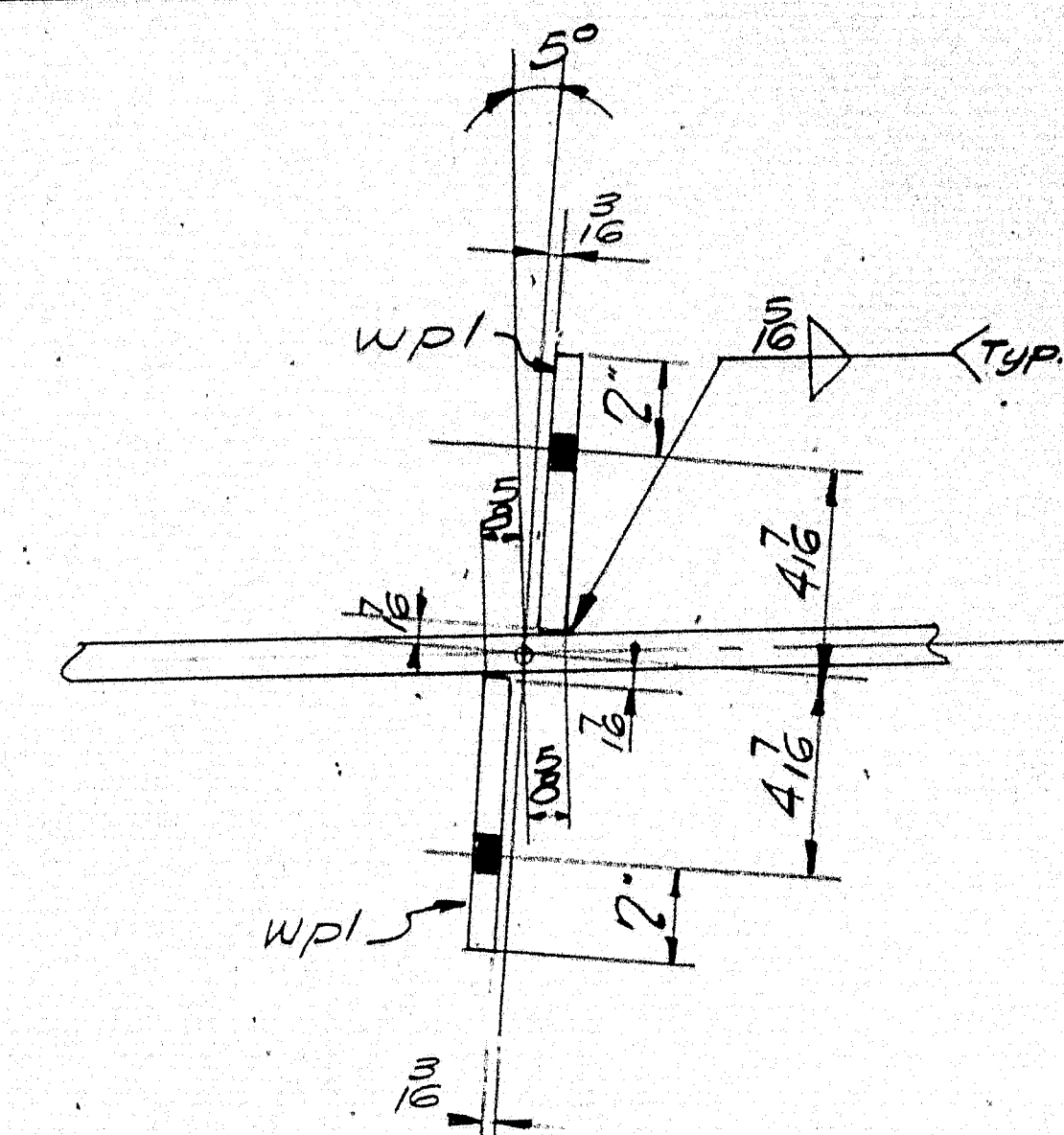
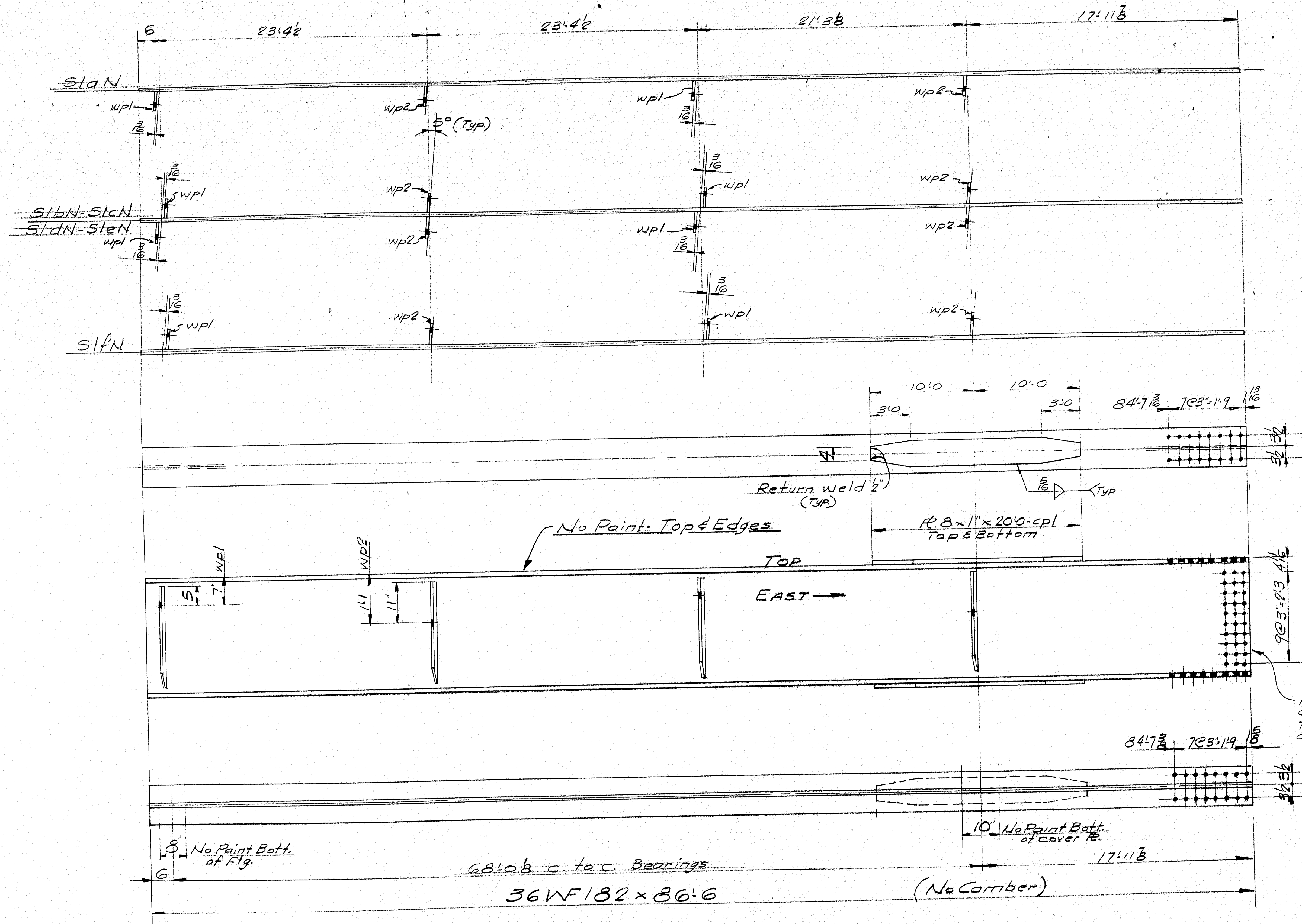
SEBASTICOOK BRIDGE
PITTSFIELD, MAINE

CUSTOMER CIANCHETTE BROS.
DESIGNER MAINE S.H.C. BRIDGE DIV.

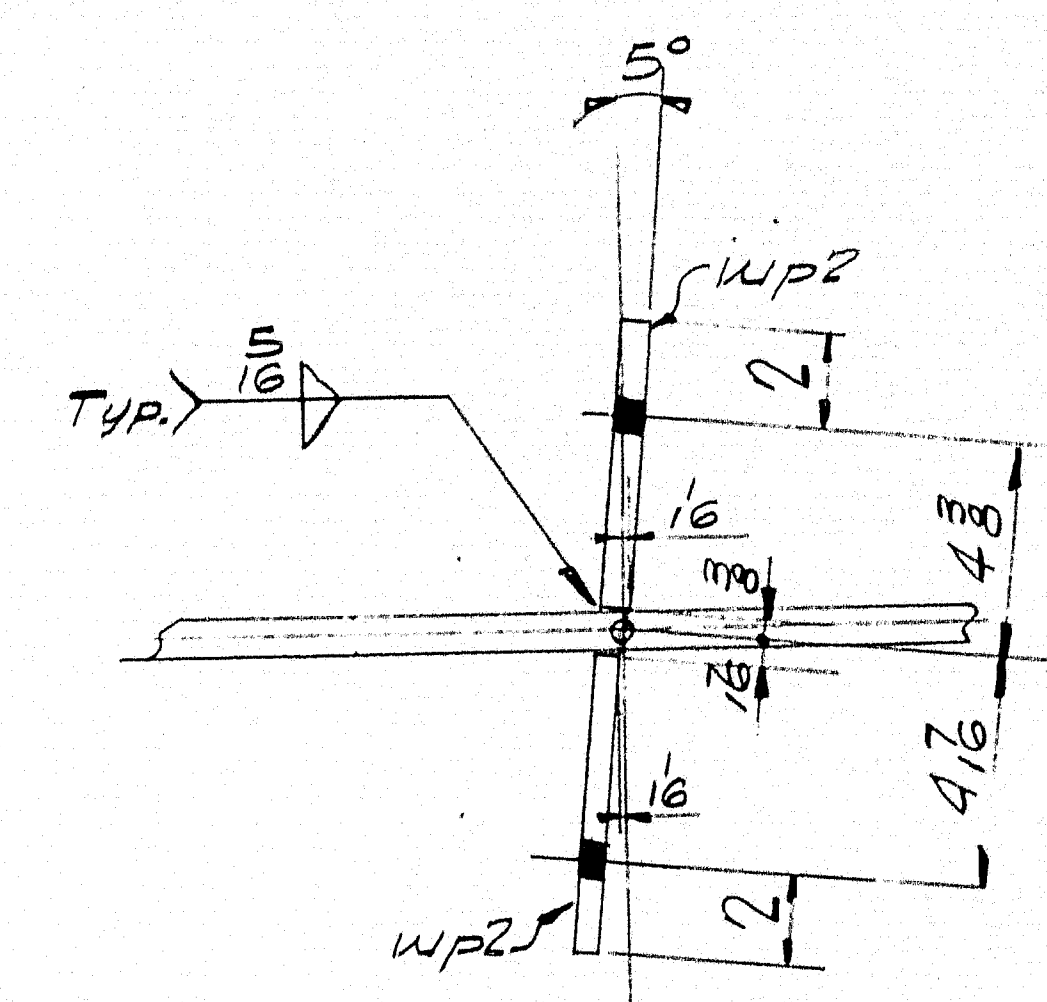
ORDER NO. VERBAL DWG. NO. 563-48-57



Sections taken looking down @ web



Detail@wpl



Detail @ wp2

Holes in web are to be drilled using spl as a template while beams are shop assembled

SPLICE NOTE

SPLICE NOTE
HOLES ARE FOR HIGH TENSILE BOLTS
They are to be free from burrs
and shall not be painted on any
surface within 5" of such open
holes.

For Bill of Materials
General Notes see Dwg. 59

NORTH BOUND

STRINGER DETAILS-SPAN 1

APP. 4.22.65

Ramsdell & Martin, Rolling Mills Company

South Portland 7, Maine

SEBASTICOOK BRIDGE
PITTSFIELD, MAINE

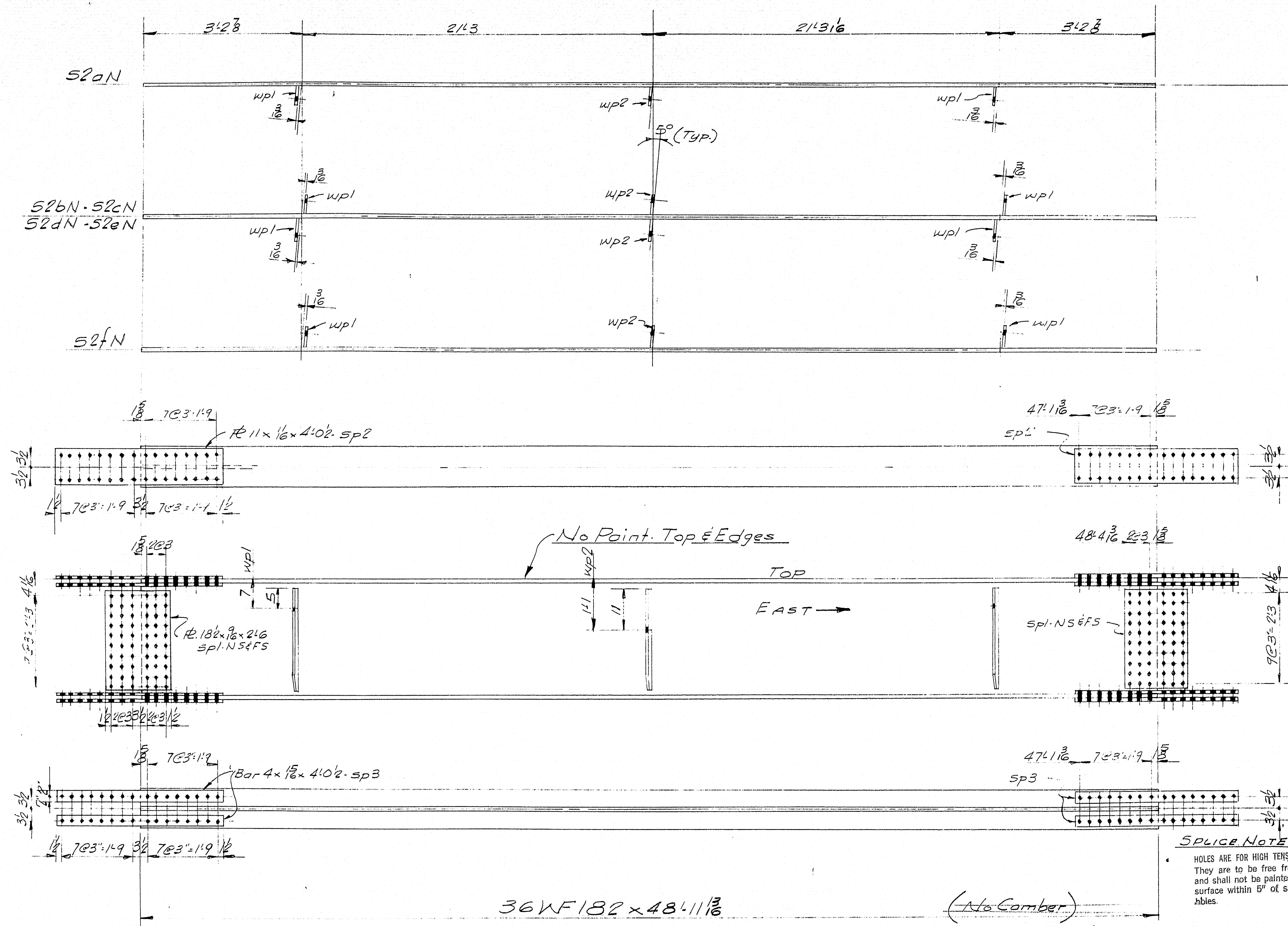
CUSTOMER CIANCHETTE BROS

DESIGNER	VIAINE J. H. C. BRIDGES	
	11	BC3 18-55

ORDER NO. <u>VERBAL</u>	DWG. NO. <u>005-40-2</u>
-------------------------	--------------------------

89-174

Sections taken looking down @ web.



36WF182 x 48'11 1/8"

(No Camber)

S2a N - ONE REQ'D.
S2b N - ONE REQ'D.
S2c N - ONE REQ'D.

S2d N - ONE REQ'D.
S2e N - ONE REQ'D.
S2f N - ONE REQ'D.

GENERAL NOTES

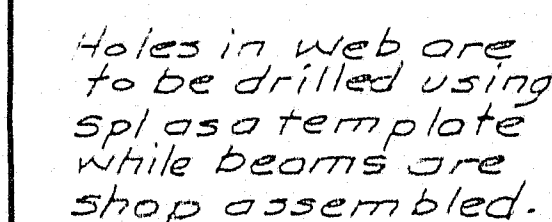
1. Material for stringers, cover plates & splices shall conform to A.S.T.M. A-36. All other steel shall conform to either A.S.T.M. A-36 or A-7.
2. Holes in field splices are to be sub-punched (or sub-drilled) and reamed while assembled in the shop & connecting parts to be match marked & bolted for shipment. For shop layout see Dwg. 54.
3. Holes: splices 1/2" φ
re. s'wp 1/2" φ

SPICE NOTE

HOLES ARE FOR HIGH TENSILE BOLTS
They are to be free from burrs
and shall not be painted on any
surface within 5" of such open
holes.

SHIP		BILL OF MATERIAL				DWG. NO. B63-48-S9	
MARK	NO.	MARK	SHAPE	LENGTH	WT.	REMARKS	
S1a N	1		36WF182	86'6"		No Camber	
S1b N	1			86'6"			
S1c N	1			86'6"			
S1d N	1			86'6"			
S1e N	1			86'6"			
S1f N	1			86'6"			
S2a N	1			48'11 ³ / ₈ "			
S2b N	1			48'11 ³ / ₈ "			
S2c N	1			48'11 ³ / ₈ "			
S2d N	1			48'11 ³ / ₈ "			
S2e N	1			48'11 ³ / ₈ "			
S2f N	1			48'11 ³ / ₈ "			
S3a N	1			86'5 ³ / ₈ "			
S3b N	1			86'5 ³ / ₈ "			
S3c N	1			86'5 ³ / ₈ "			
S3d N	1			86'5 ³ / ₈ "			
S3e N	1			86'5 ³ / ₈ "			
S3f N	1			86'5 ³ / ₈ "			
S3g N	1			86'5 ³ / ₈ "			
S3h N	1			86'5 ³ / ₈ "			
S3i N	1			86'5 ³ / ₈ "			
S3j N	1			86'5 ³ / ₈ "			
S3k N	1			86'5 ³ / ₈ "			
S3l N	1			86'5 ³ / ₈ "			
S3m N	1			86'5 ³ / ₈ "			
S3n N	1			86'5 ³ / ₈ "			
S3o N	1			86'5 ³ / ₈ "			
S3p N	1			86'5 ³ / ₈ "			
S3q N	1			86'5 ³ / ₈ "			
S3r N	1			86'5 ³ / ₈ "			
S3s N	1			86'5 ³ / ₈ "			
S3t N	1			86'5 ³ / ₈ "			
S3u N	1			86'5 ³ / ₈ "			
S3v N	1			86'5 ³ / ₈ "			
S3w N	1			86'5 ³ / ₈ "			
S3x N	1			86'5 ³ / ₈ "			
S3y N	1			86'5 ³ / ₈ "			
S3z N	1			86'5 ³ / ₈ "			
S3aa N	1			86'5 ³ / ₈ "			
S3ab N	1			86'5 ³ / ₈ "			
S3ac N	1			86'5 ³ / ₈ "			
S3ad N	1			86'5 ³ / ₈ "			
S3ae N	1			86'5 ³ / ₈ "			
S3af N	1			86'5 ³ / ₈ "			
S3ag N	1			86'5 ³ / ₈ "			
S3ah N	1			86'5 ³ / ₈ "			
S3ai N	1			86'5 ³ / ₈ "			
S3aj N	1			86'5 ³ / ₈ "			
S3ak N	1			86'5 ³ / ₈ "			
S3al N	1			86'5 ³ / ₈ "			
S3am N	1			86'5 ³ / ₈ "			
S3an N	1			86'5 ³ / ₈ "			
S3ao N	1			86'5 ³ / ₈ "			
S3ap N	1			86'5 ³ / ₈ "			
S3aq N	1			86'5 ³ / ₈ "			
S3ar N	1			86'5 ³ / ₈ "			
S3as N	1			86'5 ³ / ₈ "			
S3at N	1			86'5 ³ / ₈ "			
S3au N	1			86'5 ³ / ₈ "			
S3av N	1			86'5 ³ / ₈ "			
S3aw N	1			86'5 ³ / ₈ "			
S3ax N	1			86'5 ³ / ₈ "			
S3ay N	1			86'5 ³ / ₈ "			
S3az N	1			86'5 ³ / ₈ "			
S3ba N	1			86'5 ³ / ₈ "			
S3bb N	1			86'5 ³ / ₈ "			
S3bc N	1			86'5 ³ / ₈ "			
S3bd N	1			86'5 ³ / ₈ "			
S3be N	1			86'5 ³ / ₈ "			
S3bf N	1			86'5 ³ / ₈ "			
S3bg N	1			86'5 ³ / ₈ "			
S3bh N	1			86'5 ³ / ₈ "			
S3bi N	1			86'5 ³ / ₈ "			
S3bj N	1			86'5 ³ / ₈ "			
S3bk N	1			86'5 ³ / ₈ "			
S3bl N	1			86'5 ³ / ₈ "			
S3bm N	1			86'5 ³ / ₈ "			
S3bn N	1			86'5 ³ / ₈ "			
S3bo N	1			86'5 ³ / ₈ "			
S3bp N	1			86'5 ³ / ₈ "			
S3bq N	1			86'5 ³ / ₈ "			
S3br N	1			86'5 ³ / ₈ "			
S3bs N	1			86'5 ³ / ₈ "			
S3bt N	1			86'5 ³ / ₈ "			
S3bu N	1			86'5 ³ / ₈ "			
S3bv N	1			86'5 ³ / ₈ "			
S3bw N	1			86'5 ³ / ₈ "			
S3bx N	1			86'5 ³ / ₈ "			
S3by N	1			86'5 ³ / ₈ "			
S3bz N	1			86'5 ³ / ₈ "			
S3ca N	1			86'5 ³ / ₈ "			
S3cb N	1			86'5 ³ / ₈ "			
S3cc N	1			86'5 ³ / ₈ "			
S3cd N	1			86'5 ³ / ₈ "			
S3ce N	1			86'5 ³ / ₈ "			
S3cf N	1			86'5 ³ / ₈ "			
S3cg N	1			86'5 ³ / ₈ "			
S3ch N	1			86'5 ³ / ₈ "			
S3ci N	1			86'5 ³ / ₈ "			
S3cj N	1			86'5 ³ / ₈ "			
S3ck N	1			86'5 ³ / ₈ "			
S3cl N	1			86'5 ³ / ₈ "			
S3cm N	1			86'5 ³ / ₈ "			
S3cn N	1			86'5 ³ / ₈ "			
S3co N	1			86'5 ³ / ₈ "			
S3cp N	1			86'5 ³ / ₈ "			
S3cq N	1			86'5 ³ / ₈ "			
S3cr N	1			86'5 ³ / ₈ "			
S3cs N	1			86'5 ³ / ₈ "			
S3ct N	1			86'5 ³ / ₈ "			
S3cu N	1			86'5 ³ / ₈ "			
S3cv N	1			86'5 ³ / ₈ "			
S3cw N	1			86'5 ³ / ₈ "			
S3cx N	1			86'5 ³ / ₈ "			
S3cy N	1			86'5 ³ / ₈ "			
S3cz N	1			86'5 ³ / ₈ "			
S3da N	1			86'5 ³ / ₈ "			
S3db N	1			86'5 ³ / ₈ "			
S3dc N	1			86'5 ³ / ₈ "			
S3dd N	1			86'5 ³ / ₈ "			
S3de N	1			86'5 ³ / ₈ "			
S3df N	1			86'5 ³ / ₈ "			
S3dg N	1			86'5 ³ / ₈ "			
S3dh N	1			86'5 ³ / ₈ "			
S3di N	1			86'5 ³ / ₈ "			
S3dj N	1			86'5 ³ / ₈ "			
S3dk N	1			86'5 ³ / ₈ "			
S3dl N	1			86'5 ³ / ₈ "			
S3dm N	1			86'5 ³ / ₈ "			
S3dn N	1			86'5 ³ / ₈ "			
S3do N	1			86'5 ³ / ₈ "			
S3dp N	1			86'5 ³ / ₈ "			
S3dq N	1			86'5 ³ / ₈ "			
S3dr N	1			86'5 ³ / ₈ "			
S3ds N	1			86'5 ³ / ₈ "			
S3dt N	1			86'5 ³ / ₈ "			
S3du N	1			86'5 ³ / ₈ "			
S3dv N	1			86'5 ³ / ₈ "			
S3dw N	1			86'5 ³ / ₈ "			
S3dx N	1			86'5 ³ / ₈ "			
S3dy N	1			86'5 ³ / ₈ "			
S3dz N	1			86'5 ³ / ₈ "			
S3ea N	1			86'5 ³ / ₈ "			
S3eb N	1			86'5 ³ / ₈ "			
S3ec N	1			86'5 ³ / ₈ "			
S3ed N	1			86'5 ³ / ₈ "			
S3ee N	1			86'5 ³ / ₈ "			
S3ef N	1			86'5 ³ / ₈ "			
S3eg N	1			86'5 ³ / ₈ "			
S3eh N	1			86'5 ³ / ₈ "			
S3ei N	1			86'5 ³ / ₈ "			
S3ej N	1			86'5 ³ / ₈ "			
S3ek N	1			86'5 ³ / ₈ "			
S3el N	1			86'5 ³ / ₈ "			
S3em N	1			86'5 ³ / ₈ "			
S3en N	1			86'5 ³ / ₈ "			
S3eo N	1			86'5 ³ / ₈ "			
S3ep N	1			86'5 ³ / ₈ "			
S3eq N	1			86'5 ³ / ₈ "			
S3er N	1			86'5 ³ / ₈ "			
S3es N	1			86'5 ³ / ₈ "			
S3et N	1			86'5 ³ / ₈ "			
S3eu N	1			86'5 ³ / ₈ "			
S3ev N	1			86'5 ³ / ₈ "			
S3ew N	1			86'5 ³ / ₈ "			
S3ex N	1			86'5 ³ / ₈ "			
S3ey N	1			86'5 ³ / ₈ "			
S3ez N	1			86'5 ³ / ₈ "			
S3fa N	1			86'5 ³ / ₈ "			
S3fb N	1			86'5 ³ / ₈ "			
S3fc N	1			86'5 ³ / ₈ "			
S3fd N	1			86'5 ³ / ₈ "			
S3fe N	1			86'5 ³ / ₈ "			
S3ff N	1			86'5 ³ / ₈ "			
S3fg N	1			86'5 ³ / ₈ "			
S3fh N	1			86'5 ³ / ₈ "			
S3fi N	1			86'5 ³ / ₈ "			
S3fj N	1			86'5 ³ / ₈ "			
S3fk N	1			86'5 ³ / ₈ "			
S3fl N	1			86'5 ³ / ₈ "			
S3fm N	1			86'5 ³ / ₈ "			
S3fn N	1			86'5 ³ / ₈ "			
S3fo N	1			86'5 ³ / ₈ "			
S3fp N	1			86'5 ³ / ₈ "			
S3fq N	1			86'5 ³ / ₈ "			
S3fr N	1			86'5 ³ / ₈ "			
S3fs N	1			86'5 ³ / ₈ "			
S3ft N	1			86'5 ³ / ₈ "			
S3fu N	1			86'5 ³ / ₈ "			
S3fv N	1			86'5 ³ / ₈ "			
S3fw N	1			86'5 ³ / ₈ "			
S3fx N	1			86'5 ³ / ₈ "			
S3fy N	1			86'5 ³ / ₈ "			
S3fz N	1			86'5 ³ / ₈ "			
S3ga N	1			86'5 ³ / ₈ "			
S3gb N	1			86'5 ³ / ₈ "			
S3gc N	1			86'5 ³ / ₈ "			
S3gd N	1			86'5 ³ / ₈ "			
S3ge N	1			86'5 ³ / ₈ "			
S3gf N	1			86'5 ³ / ₈ "			
S3gg N	1			86'5 ³ / ₈ "			
S3gh N	1			86'5 ³ / ₈ "			
S3gi N	1			86'5 ³ / ₈ "			
S3gj N	1			86'5 ³ / ₈ "			
S3gk N	1			86'5 ³ / ₈ "			
S3gl N	1			86'5 ³ / ₈ "			
S3gm N	1			86'5 ³ / ₈ "			
S3gn N	1			86'5 ³ / ₈			

Sections taken looking down @ web



They are also the only birds that are not afraid of people. In fact, they are often found in the company of people and are not afraid of being handled. They are also the only birds that are not afraid of being handled.

No Pint Bott.
at cover R.

17:11g

6810 c. to c. Bearings

36 WF 182 x 86.58

(No Camber)

53qN - ONE REQ'D.

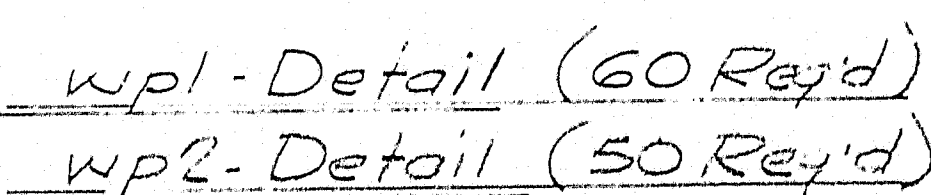
536N - ONE REG'D.

S3CN - ONE REQ'D

53DN - ONE REQ'D.

53eN - ONE REQ'D.

53fN - ONE REG'D.



For Bill of Material & General Notes see DWG 59

NORTHBOUND

STRINGER DETAILS-SPAN 3

Bancroft & Martin Rolling Mills Company
South Portland 7, Maine

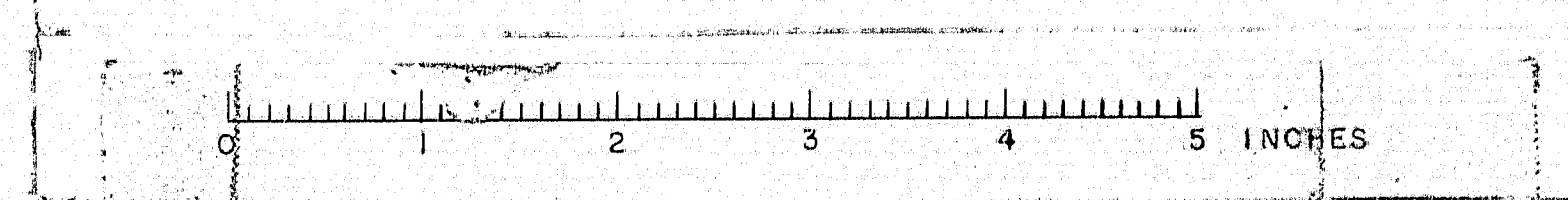
SEBASTICOOK BRIDGE
PITTSFIELD, MAINE

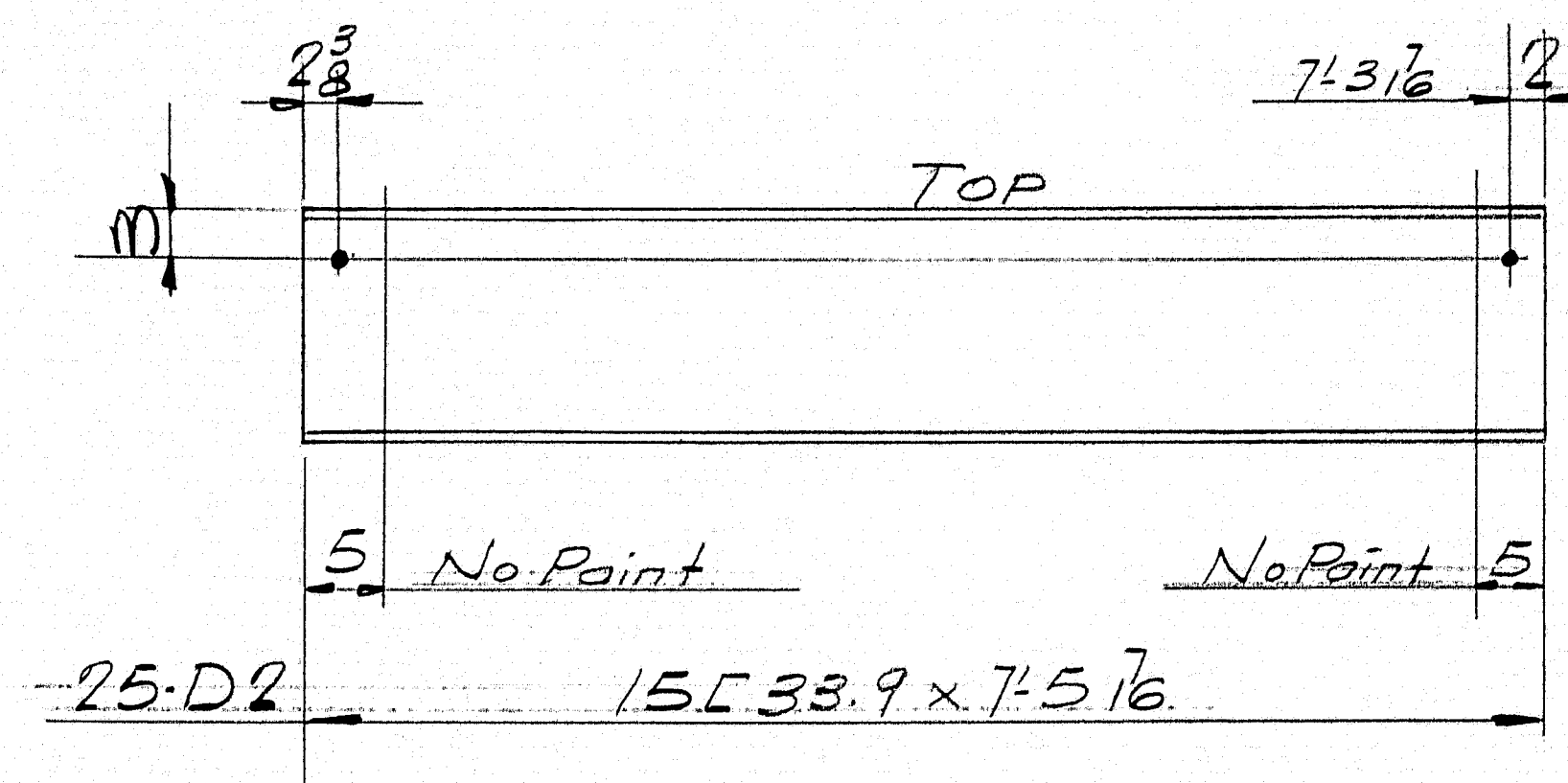
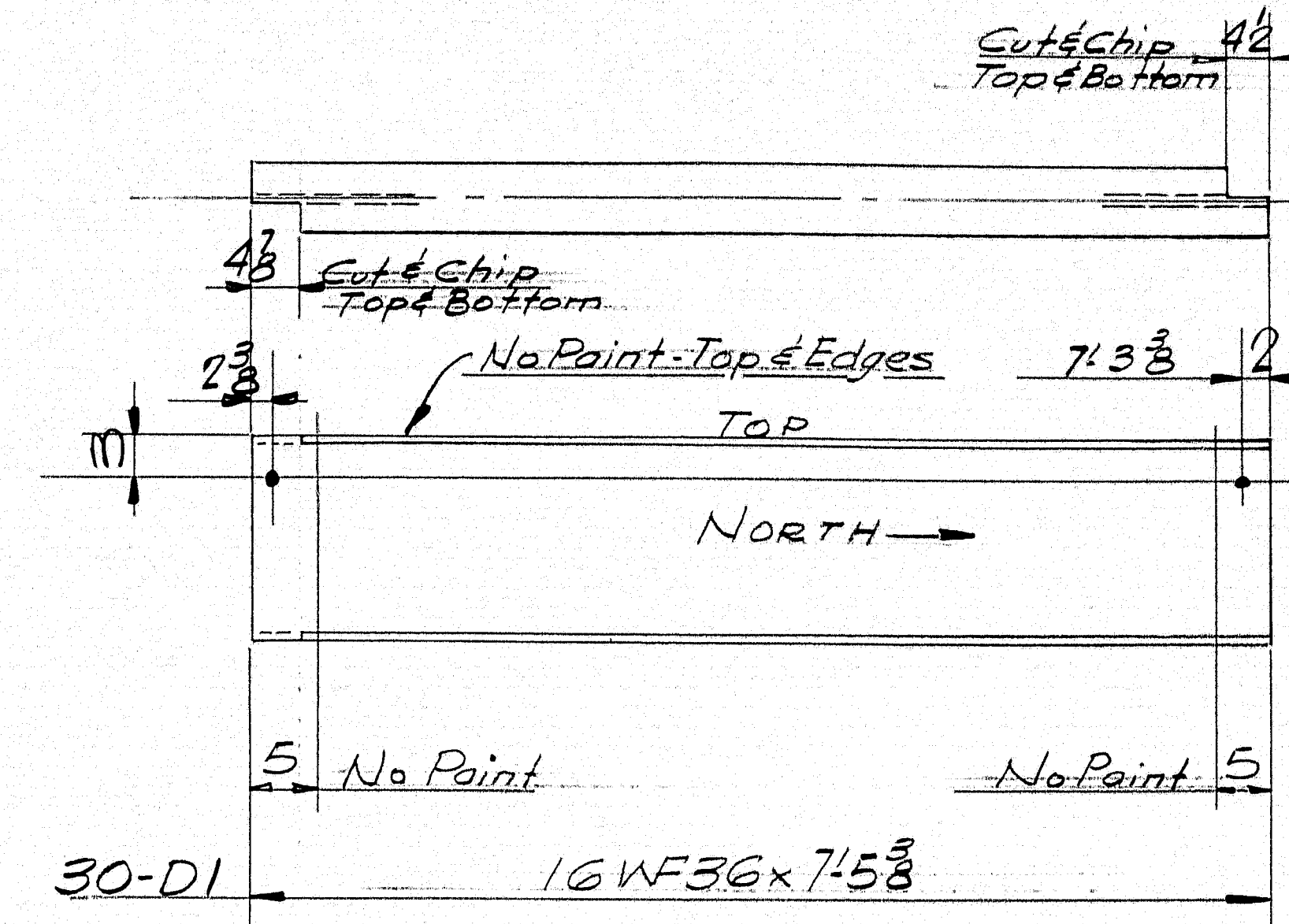
CUSTOMER CIANCHETTE BROS.
DESIGNER MAINE S.H.C. BRIDGE DIV.

ORDER NO. <u>VERBAL</u>	DWG. NO. <u>B63-48-510</u>
-------------------------	----------------------------

DRAWN	4-5-63	J.P.F.
REVISION		
REVISION		
REVISION		

89-176





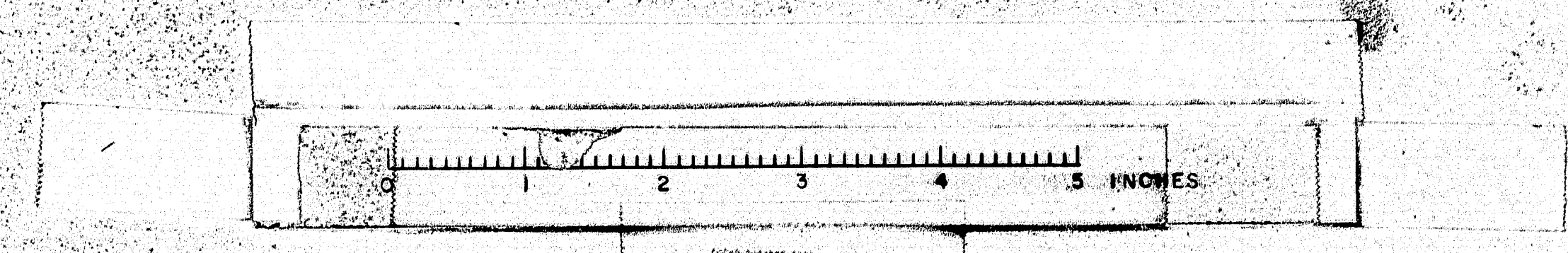
SHIP		BILL OF MATERIAL				DWG. NO. <u>B63-48-511</u>
MARK	NO.	MARK	SHAPE	LENGTH	WT.	REMARKS
D1	30		16WF36	7.53		
D2	25		15L33.9	7.516		
FIELD	20		5" M. Bolts	0.13		
ITEM 702-103						

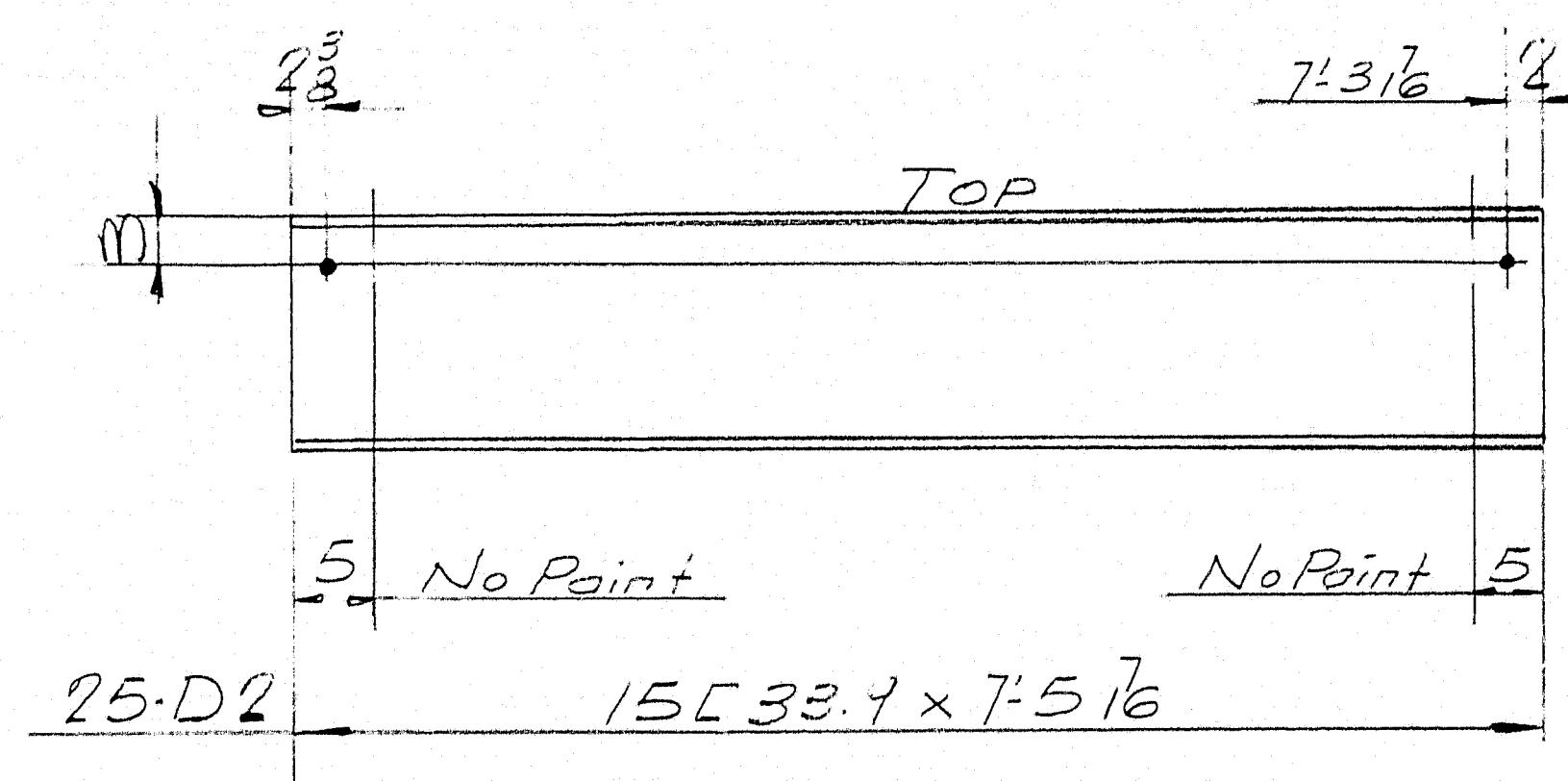
SHOP CONNECTIONS:
 FIELD CONNECTIONS: 3" Temp. M. Bolts - Welded
 HOLES: 1/2" Ø
 PAINT: Per Maine Specs & as noted

SOUTHBOUND
DIAPHRAGMS
 Bancroft & Martin Inc.
 South Portland, Maine
SEBASTICOOK BRIDGE
 PITTSFIELD, MAINE
 CUSTOMER: CIANCHETTE BROS.
 DESIGNER: MAINE S.H.C. BRIDGE DIV.
 ORDER NO. VERBAL DWG. NO. B63-48-511

DRAWN	4-563 J.P.P.
REVISION	
REVISION	
REVISION	

89-177



[illegible]

SHOP CONNECTIONS:
FIELD CONNECTIONS: 3 Temp M. Bolts - Welded
HOLES: 1/2" ϕ
PAINT: Per Maine Specs & as noted

NORTHBOND

DIAPHRAGMS

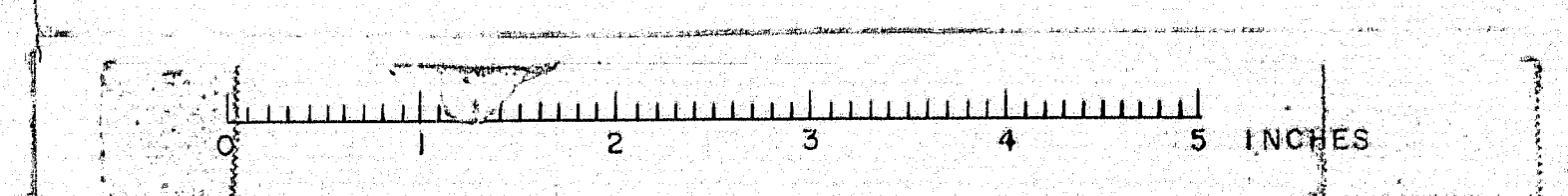
Bancroft & Martin Inc.
South Portland 7, Maine

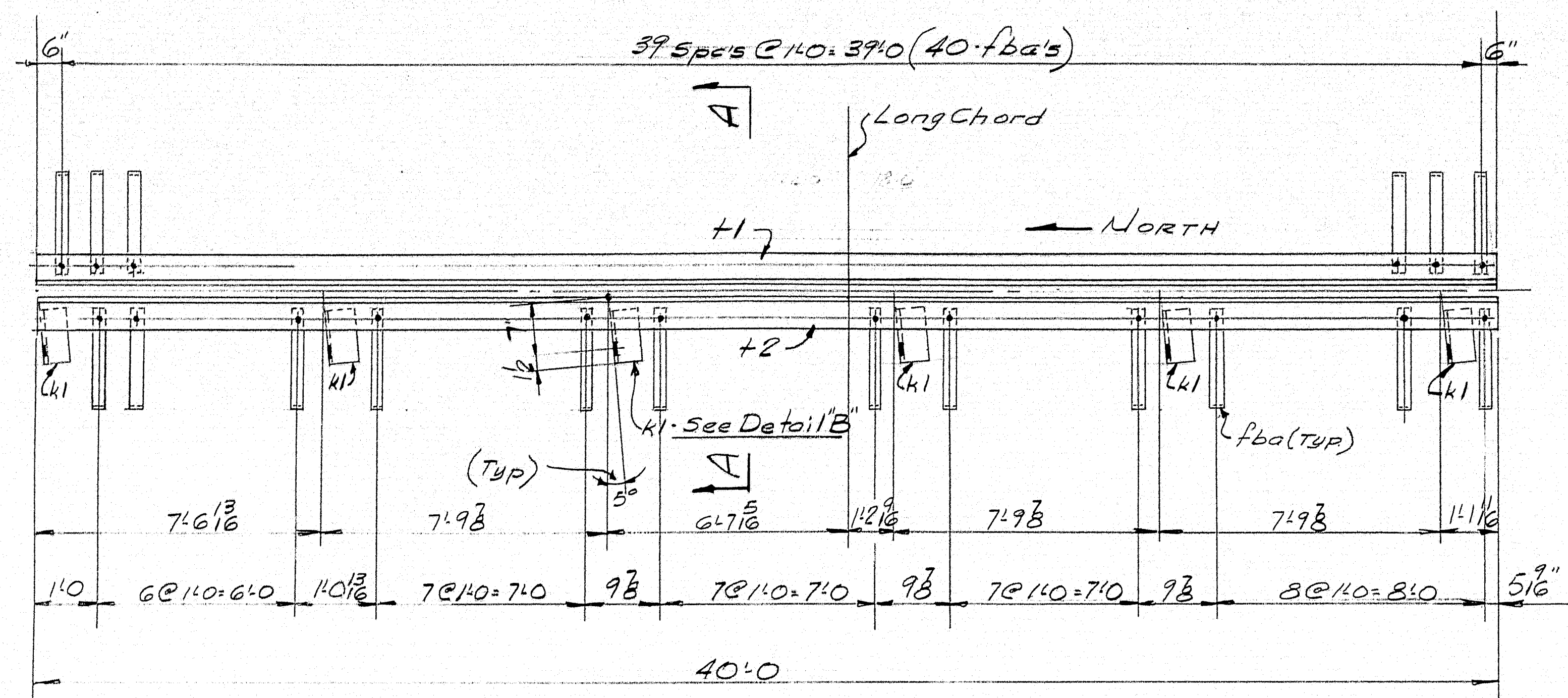
SEBASTICOOK BRIDGE
PITTSFIELD, MAINE

CUSTOMER CIANCHETTE BROS.
DESIGNER MAINE S. H. C. BRIDGE DIV.

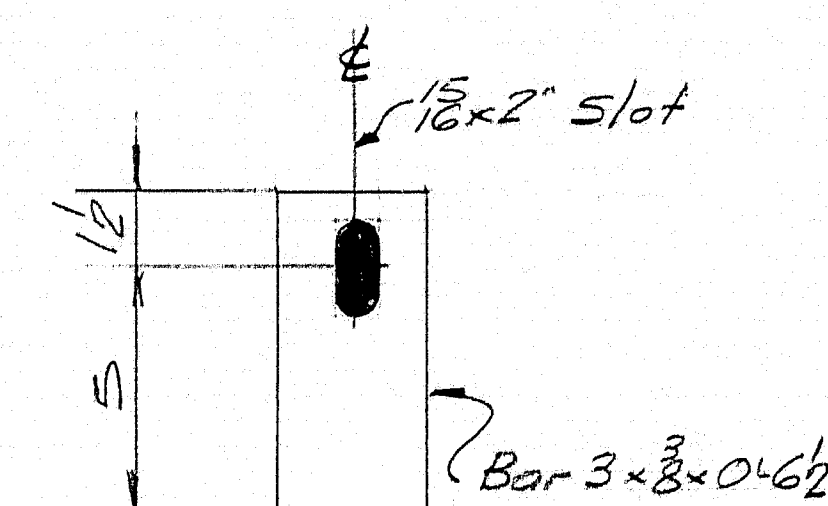
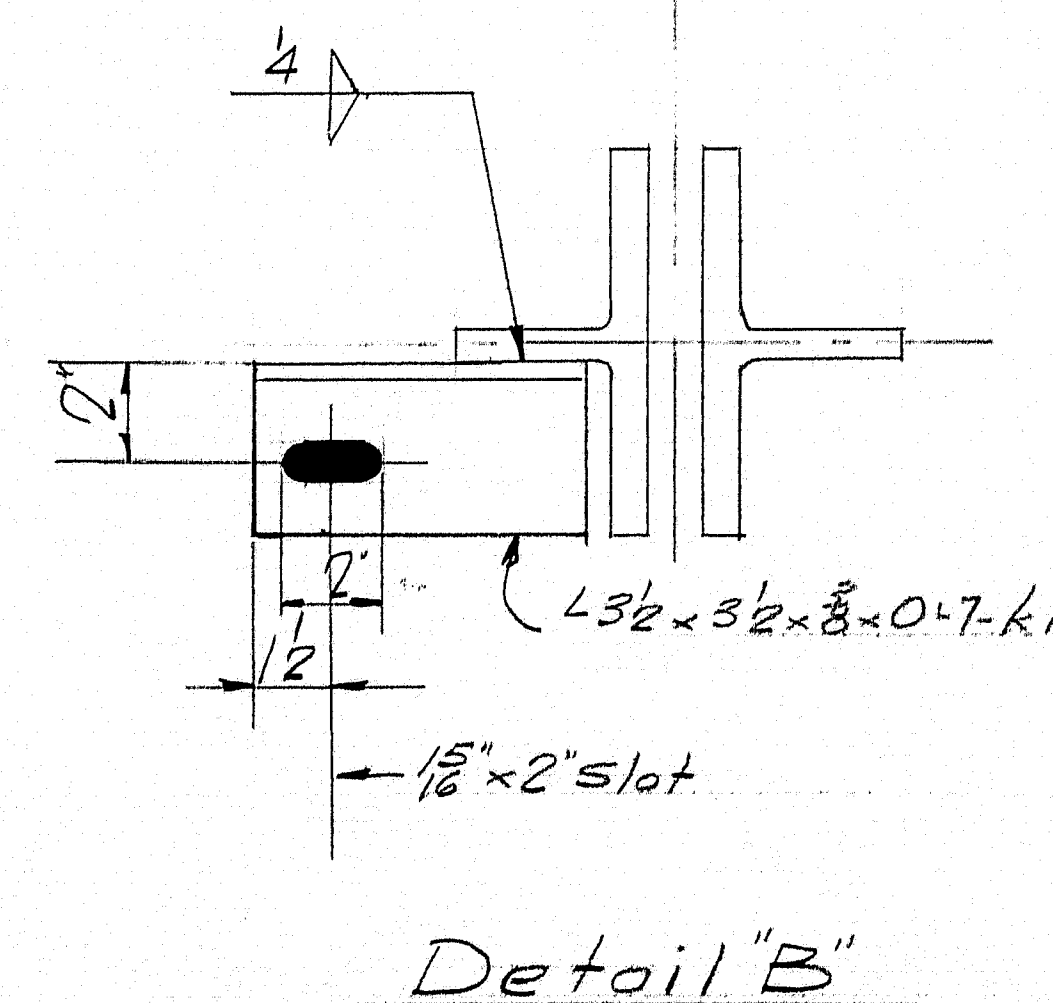
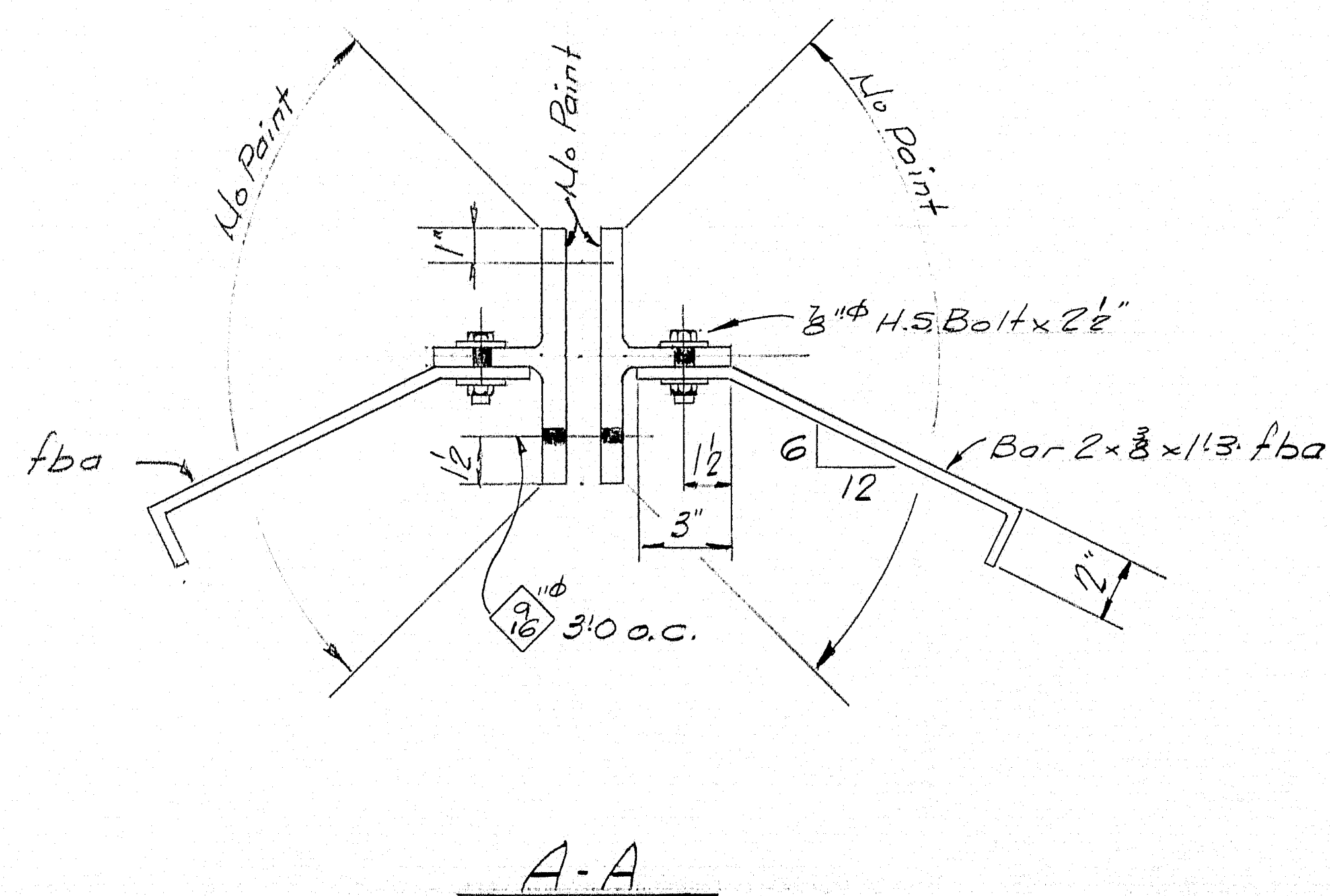
ORDER NO. <u>VERBAL</u>	DWG. NO. <u>B63-48-512</u>
-------------------------	----------------------------

89-178





AJ1- ONE REQ'D
Fasten together w/ $\frac{1}{2}$ " ϕ Bolts for shipment



bl-6 Regd:
No Point
Bolt to kl for shipment
1-3/8" M. Bolt x 2"

[illegible]

SHOP CONNECTIONS: Bolted-Welded
FIELD CONNECTIONS: Welded
HOLES: 1/2" unless noted
PAINT: Per Maine Spec's as noted

3 SOUTHBOUND
ARMORED JOINT- ABUT.#2

Bancroft & Martin Inc.
South Portland 7, Maine

SEBASTICOOK BRIDGE
PITTSFIELD, MAINE

CUSTOMER CIANCHETTE BROS.
DESIGNER MAINE S.H.C. BRIDGE DIV.

ORDER NO. VERBAL DWG. NO. B63-48-S/3

89-179

